

ALUMINIUM SUPPORT SYSTEM FOR RAINSCREEN CLADDING XKELEX X-CS25

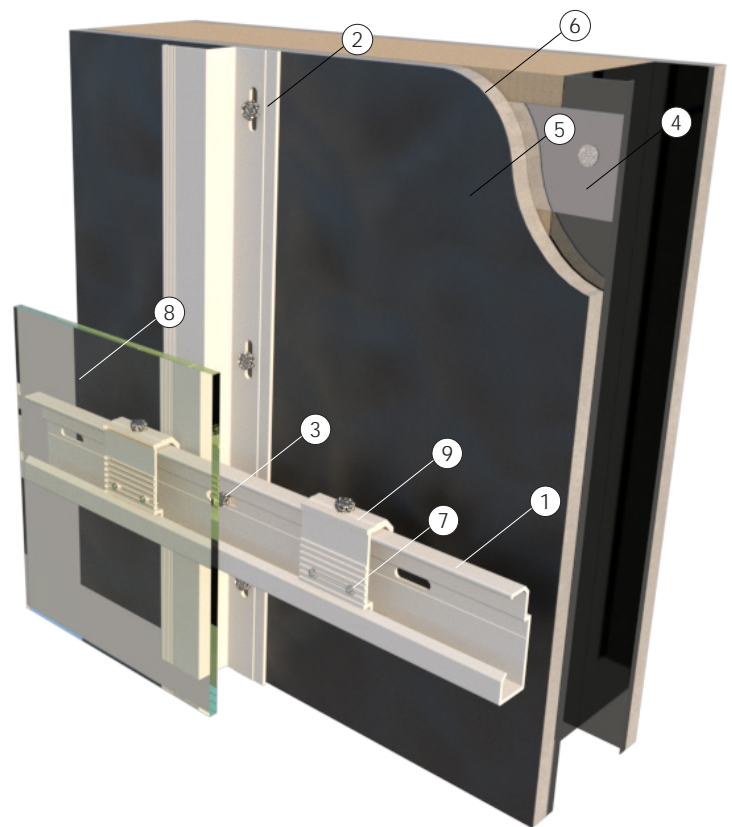


LEGEND

- 1. X-RL25 horizontal rail
- 2. X-Z25 Profile
- 3. Fixing Screw
- 4. Steel Backing Plate
- 5. A/V Barrier
- 6. Exterior Wall
- 7. T U Anchor
- 8. Exterior Panel
- 9. Hanger Clip X-CL25-L

CONTENT

- CS25-00 Xkelex System detail sheet
- CS25-01 Profiles
- CS25-02 Building Elevation
- CS25-03 Vertical Panel Joint
- CS25-04 Vertical Mid Panel
- CS25-05 Window Jamb
- CS25-06 Door Jamb
- CS25-07 Inside Corner
- CS25-08 Outside Corner
- CS25-09 Window Head
- CS25-10 Horizontal Panel Joint
- CS25-11 Window Sill
- CS25-12 Base Detail



NOTES:



SYSTEM:

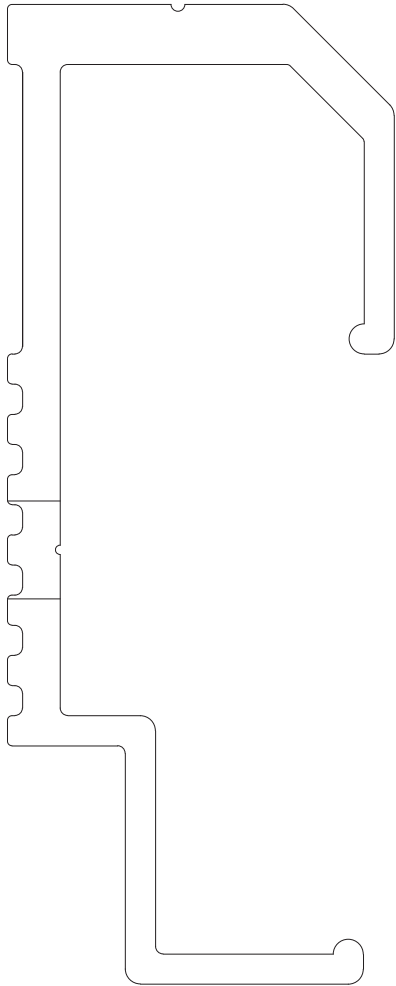
X-CS25

DETAIL:

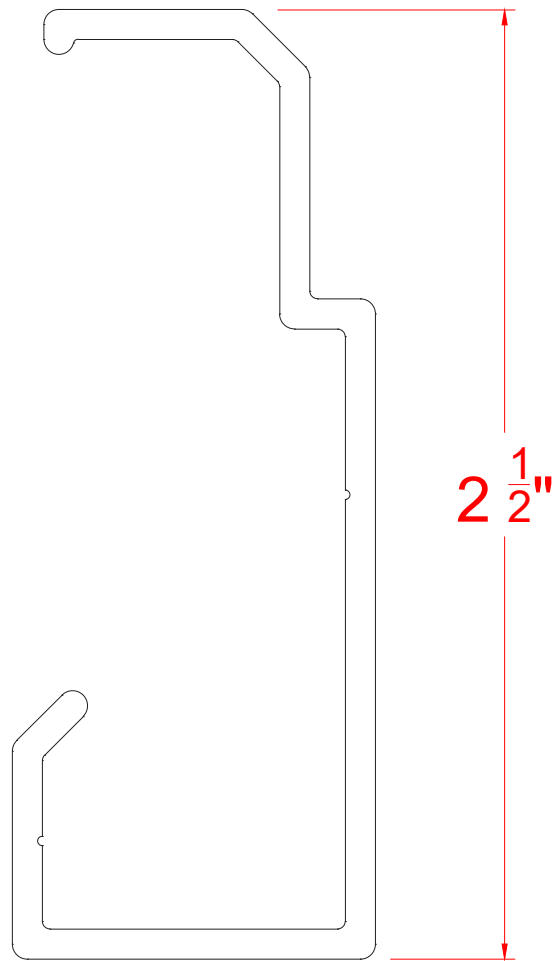
XKELEX SYSTEM

DETAIL SHEET:

CS25-00



HANGER CLIP
X-CL25 & X-CL25-L



X-RL25 RAIL

NOTES:



SYSTEM:

X-CS25

DETAIL:

PROFILES

DETAIL SHEET:

CS25-01



NOTES:



SYSTEM:

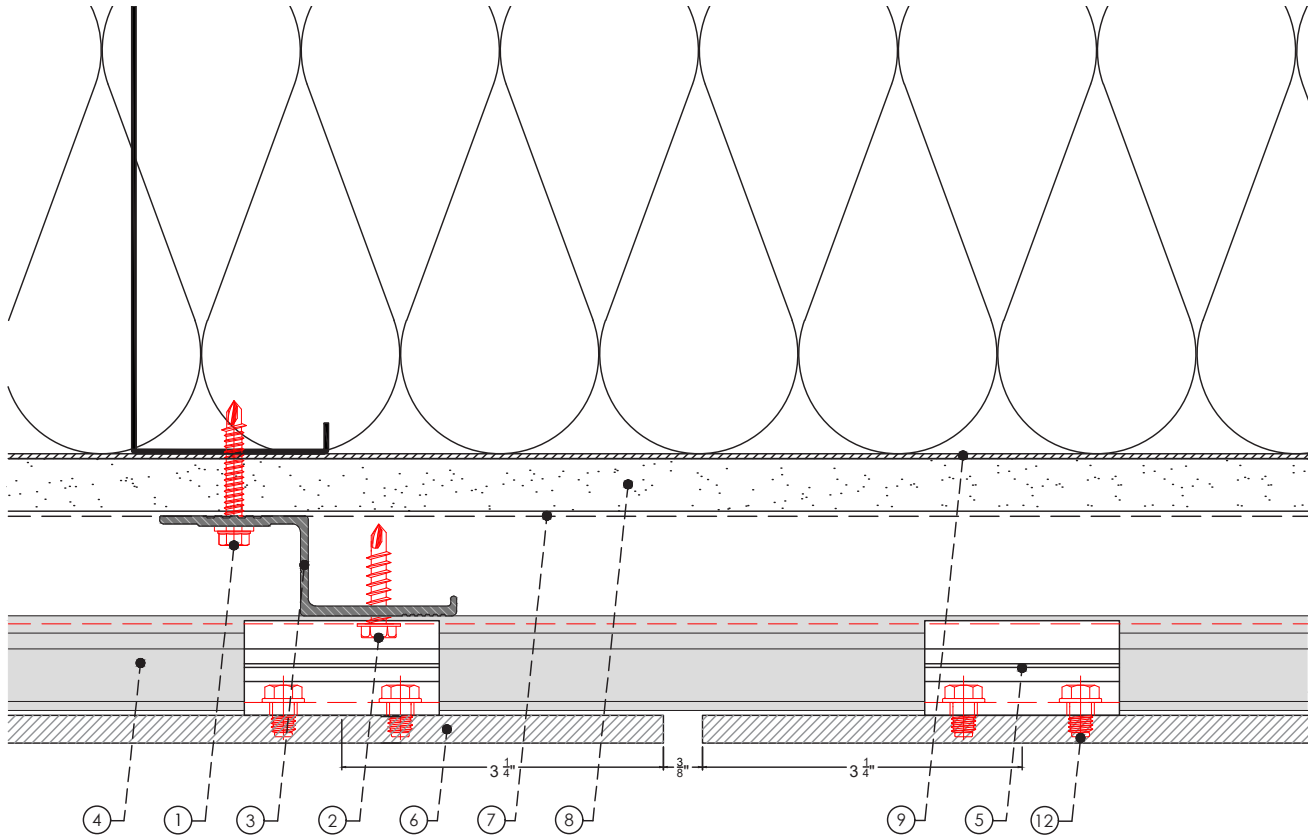
X-CS25

DETAIL:

BUILDING ELEVATION

DETAIL SHEET:

CS25-02



LEGEND

- | | |
|--------------------------|-------------------------------------|
| ① Wall anchor | ⑨ Steel Backing Plate as required |
| ② Fixing Screw | ⑩ End profile |
| ③ X-Z25 profile | ⑪ Vent Screen 40% perf. |
| ④ X-RL25 horizontal rail | ⑫ T U Anchor |
| ⑤ Hanger Clip X-CL25 | ⑬ Hanger Clip with leveler X-CL25-L |
| ⑥ Exterior panel 10-13mm | ⑭ Level Screw |
| ⑦ A/V Barrier | ⑮ Rail anchor |
| ⑧ Exterior Wall | |

NOTES:



SYSTEM:

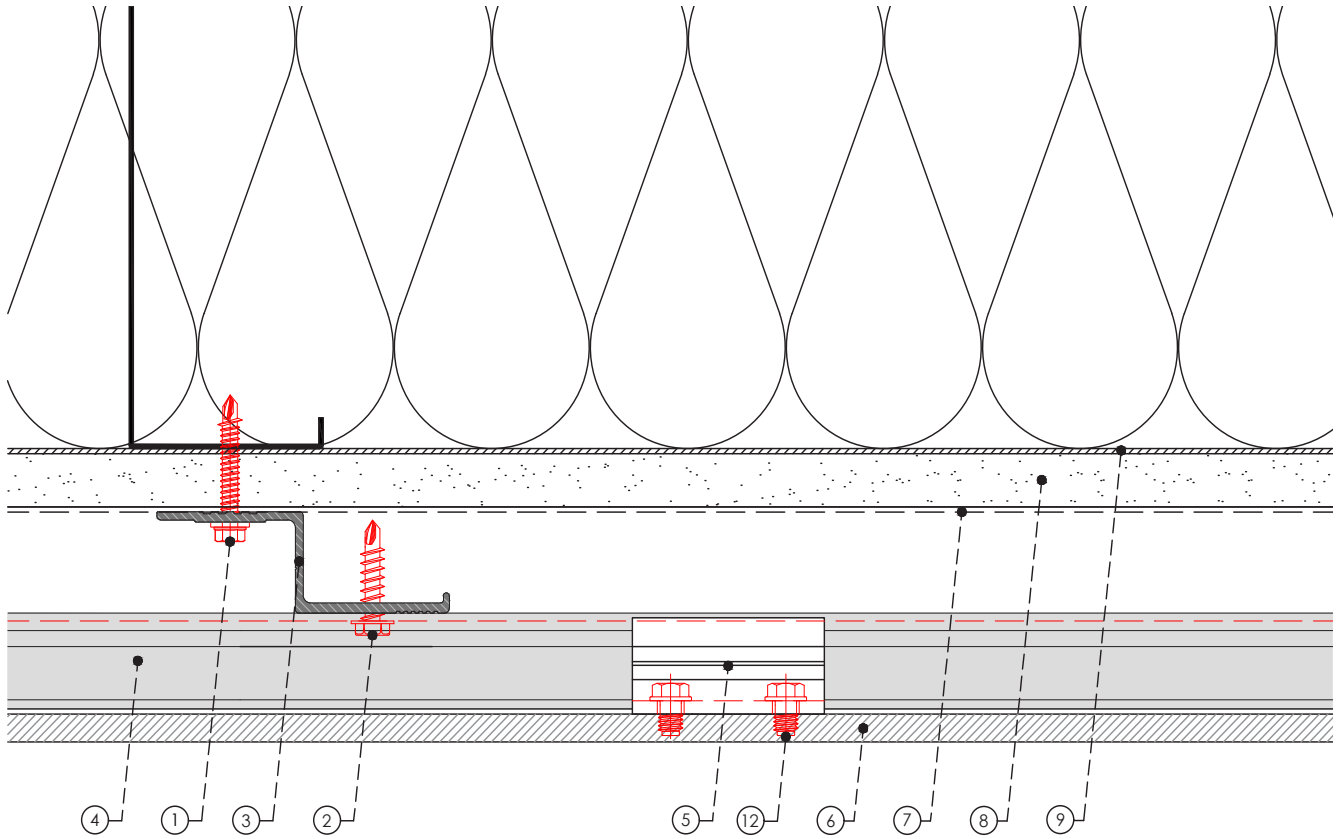
X-CS25

DETAIL:

PLAN VIEW VERTICAL PANEL JOINT

DETAIL SHEET:

CS25-03



LEGEND

- | | |
|--------------------------|-------------------------------------|
| ① Wall anchor | ⑨ Steel Backing Plate as required |
| ② Fixing Screw | ⑩ End profile |
| ③ X-Z25 profile | ⑪ Vent Screen 40% perf. |
| ④ X-RL25 horizontal rail | ⑫ T U Anchor |
| ⑤ Hanger Clip X-CL25 | ⑬ Hanger Clip with leveler X-CL25-L |
| ⑥ Exterior panel 10-13mm | ⑭ Level Screw |
| ⑦ A/V Barrier | ⑮ Rail anchor |
| ⑧ Exterior Wall | |

NOTES:



SYSTEM:

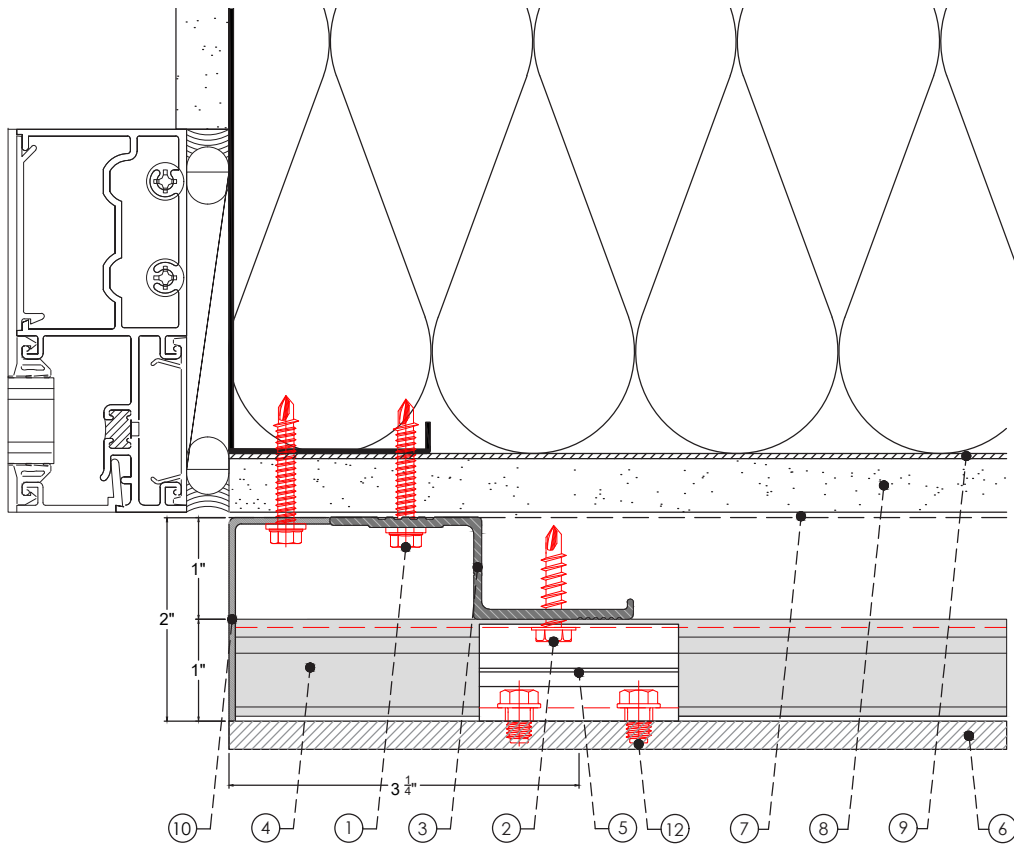
X-CS25

DETAIL:

PLAN VIEW MID PANEL

DETAIL SHEET:

CS25-04



LEGEND

- | | |
|--------------------------|-------------------------------------|
| ① Wall anchor | ⑨ Steel Backing Plate as required |
| ② Fixing Screw | ⑩ End profile |
| ③ X-Z25 profile | ⑪ Vent Screen 40% perf. |
| ④ X-RL25 horizontal rail | ⑫ T U Anchor |
| ⑤ Hanger Clip X-CL25 | ⑬ Hanger Clip with leveler X-CL25-L |
| ⑥ Exterior panel 10-13mm | ⑭ Level Screw |
| ⑦ A/V Barrier | ⑮ Rail anchor |
| ⑧ Exterior Wall | |

NOTES:



SYSTEM:

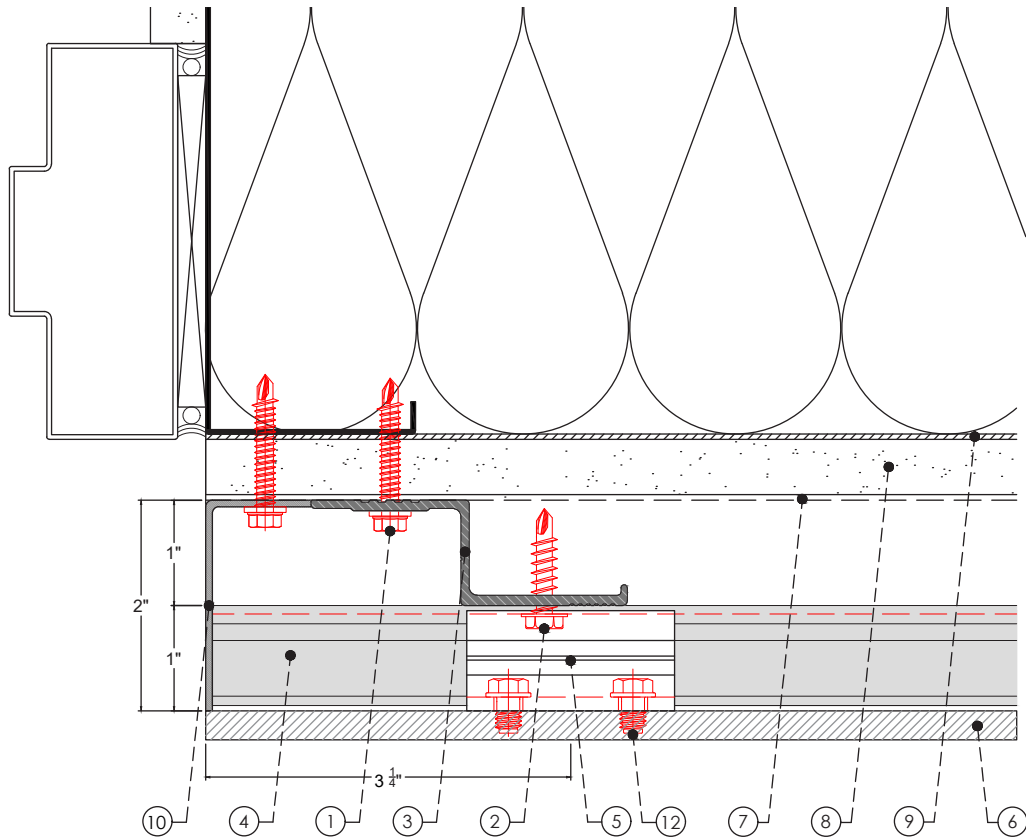
X-CS25

DETAIL:

PLAN VIEW WINDOW JAMB

DETAIL SHEET:

CS25-05



LEGEND

- | | |
|--------------------------|-------------------------------------|
| ① Wall anchor | ⑨ Steel Backing Plate as required |
| ② Fixing Screw | ⑩ End profile |
| ③ X-Z25 profile | ⑪ Vent Screen 40% perf. |
| ④ X-RL25 horizontal rail | ⑫ T U Anchor |
| ⑤ Hanger Clip X-CL25 | ⑬ Hanger Clip with leveler X-CL25-L |
| ⑥ Exterior panel 10-13mm | ⑭ Level Screw |
| ⑦ A/V Barrier | ⑮ Rail anchor |
| ⑧ Exterior Wall | |

NOTES:



SYSTEM:

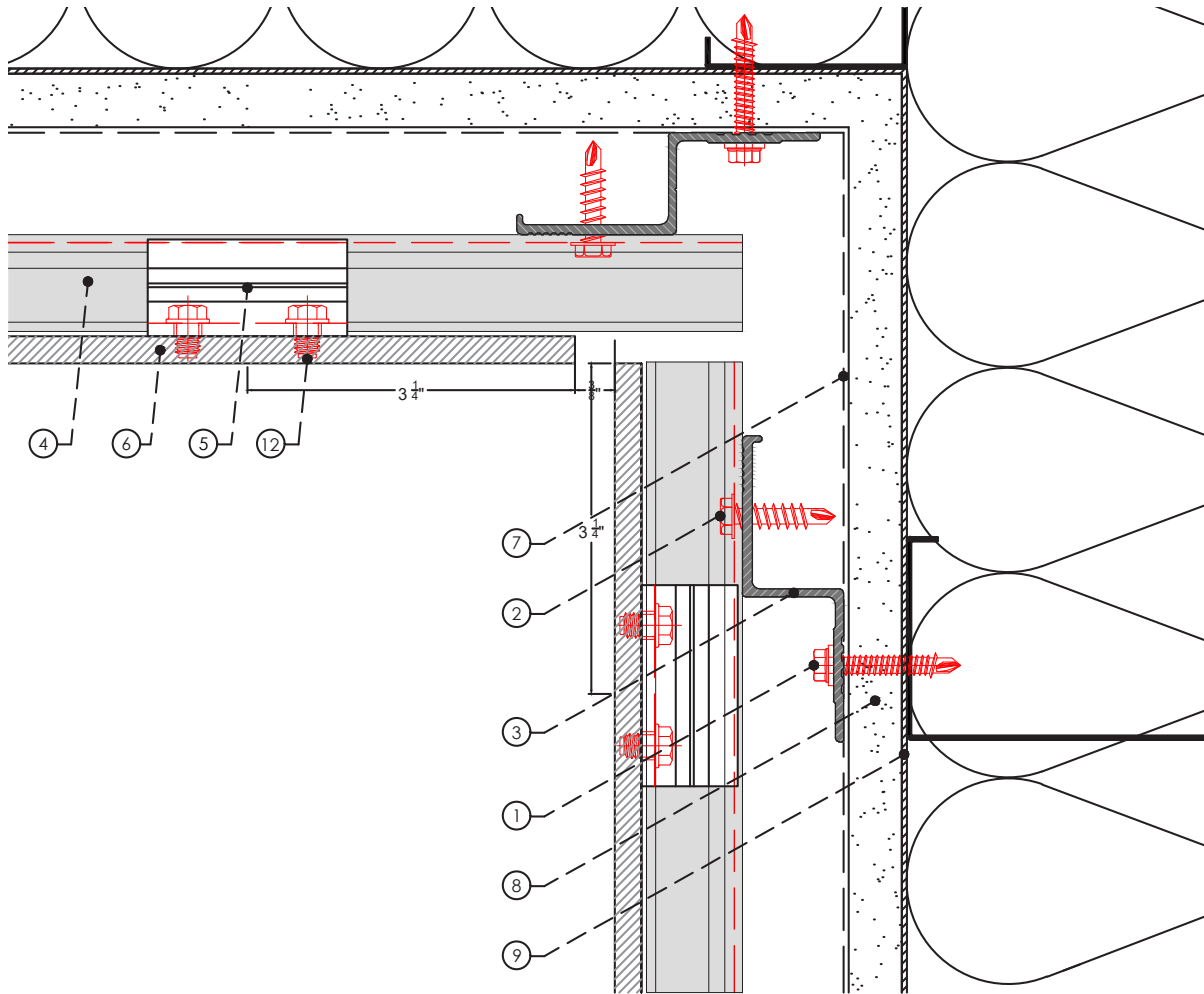
X-CS25

DETAIL:

PLAN VIEW DOOR JAMB

DETAIL SHEET:

CS25-06



LEGEND

- | | |
|--------------------------|-------------------------------------|
| ① Wall anchor | ⑨ Steel Backing Plate as required |
| ② Fixing Screw | ⑩ End profile |
| ③ X-Z25 profile | ⑪ Vent Screen 40% perf. |
| ④ X-RL25 horizontal rail | ⑫ T U Anchor |
| ⑤ Hanger Clip X-CL25 | ⑬ Hanger Clip with leveler X-CL25-L |
| ⑥ Exterior panel 10-13mm | ⑭ Level Screw |
| ⑦ A/V Barrier | ⑮ Rail anchor |
| ⑧ Exterior Wall | |

NOTES:



SYSTEM:

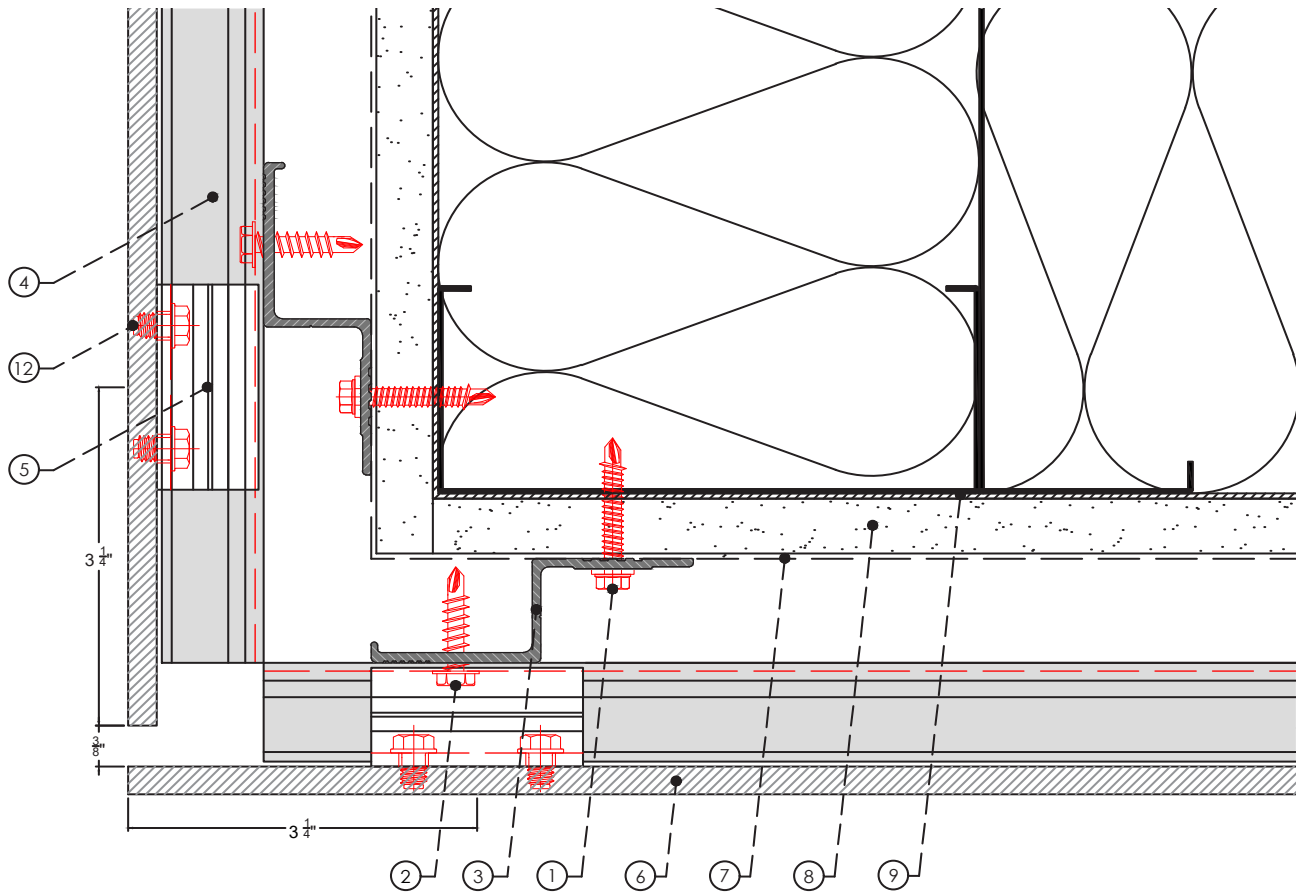
X-CS25

DETAIL:

PLAN VIEW INSIDE CORNER

DETAIL SHEET:

CS25-07



LEGEND

- | | |
|--------------------------|-------------------------------------|
| ① Wall anchor | ⑨ Steel Backing Plate as required |
| ② Fixing Screw | ⑩ End profile |
| ③ X-Z25 profile | ⑪ Vent Screen 40% perf. |
| ④ X-RL25 horizontal rail | ⑫ T U Anchor |
| ⑤ Hanger Clip X-CL25 | ⑬ Hanger Clip with leveler X-CL25-L |
| ⑥ Exterior panel 10-13mm | ⑭ Level Screw |
| ⑦ A/V Barrier | ⑮ Rail anchor |
| ⑧ Exterior Wall | |

NOTES:



SYSTEM:

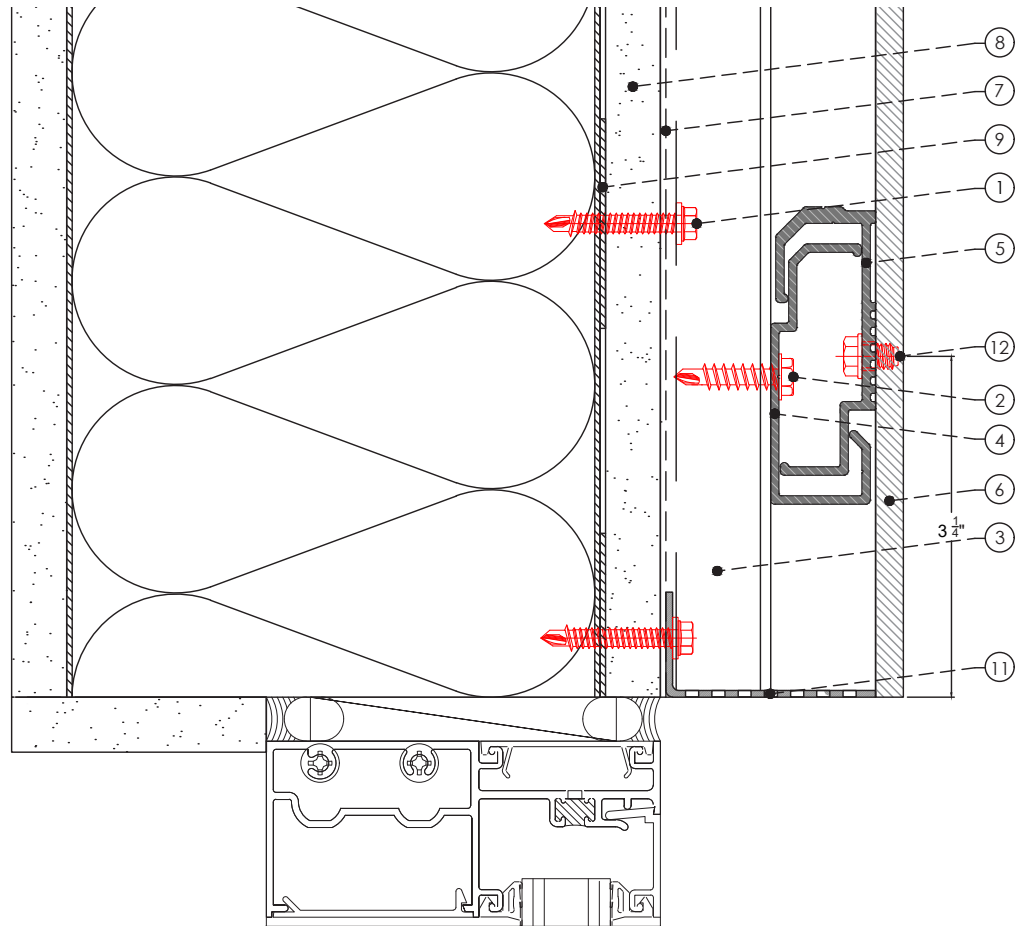
X-CS25

DETAIL:

PLAN VIEW OUTSIDE CORNER

DETAIL SHEET:

CS25-08



LEGEND

- | | |
|--------------------------|-------------------------------------|
| ① Wall anchor | ⑨ Steel Backing Plate as required |
| ② Fixing Screw | ⑩ End profile |
| ③ X-Z25 profile | ⑪ Vent Screen 40% perf. |
| ④ X-RL25 horizontal rail | ⑫ T U Anchor |
| ⑤ Hanger Clip X-CL25 | ⑬ Hanger Clip with leveler X-CL25-L |
| ⑥ Exterior panel 10-13mm | ⑭ Level Screw |
| ⑦ A/V Barrier | ⑮ Rail anchor |
| ⑧ Exterior Wall | |

NOTES:



SYSTEM:

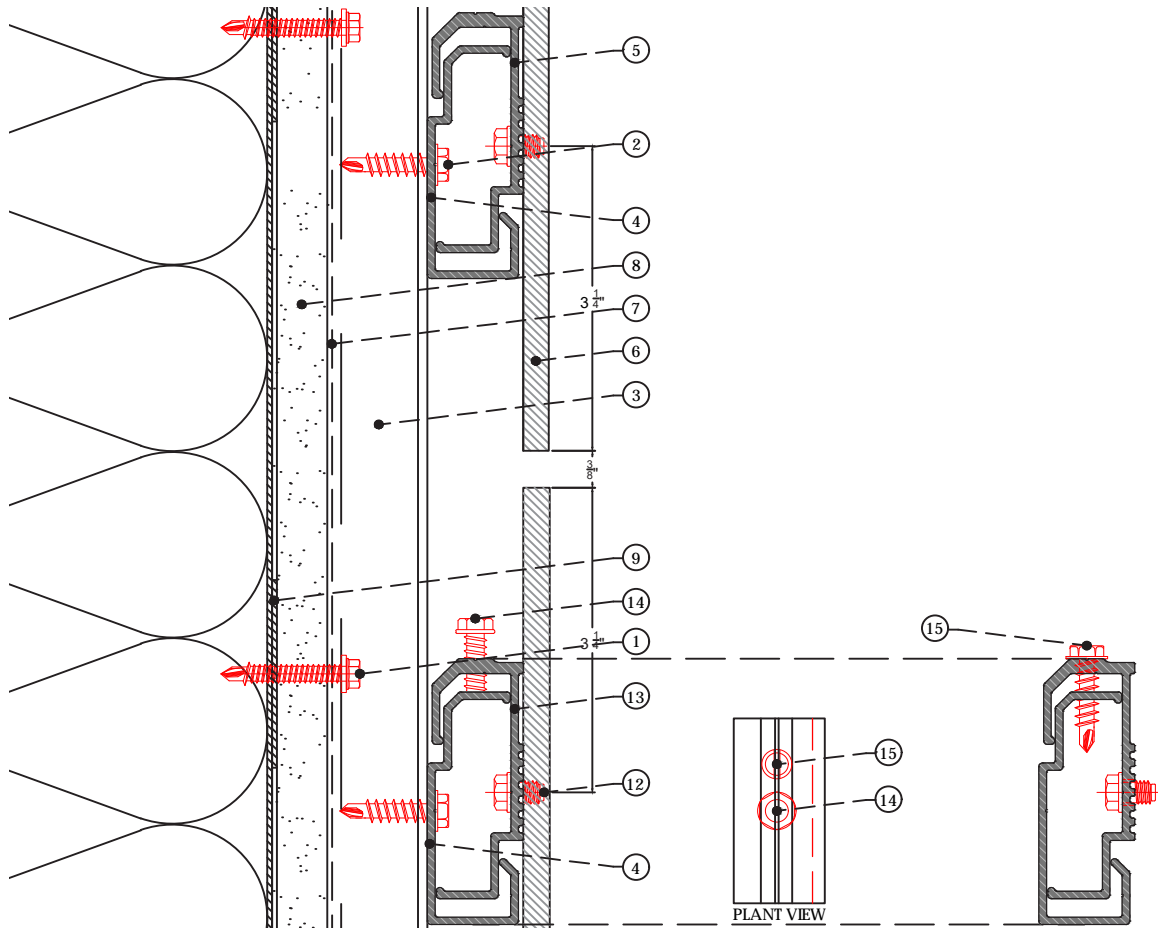
X-CS25

DETAIL:

SECTION WINDOW HEAD

DETAIL SHEET:

CS25-09



LEGEND

- | | |
|--------------------------|-------------------------------------|
| ① Wall anchor | ⑨ Steel Backing Plate as required |
| ② Fixing Screw | ⑩ End profile |
| ③ X-Z25 profile | ⑪ Vent Screen 40% perf. |
| ④ X-RL25 horizontal rail | ⑫ T U Anchor |
| ⑤ Hanger Clip X-CL25 | ⑬ Hanger Clip with leveler X-CL25-L |
| ⑥ Exterior panel 10-13mm | ⑭ Level Screw |
| ⑦ A/V Barrier | ⑮ Rail anchor |
| ⑧ Exterior Wall | |

NOTES:



SYSTEM:

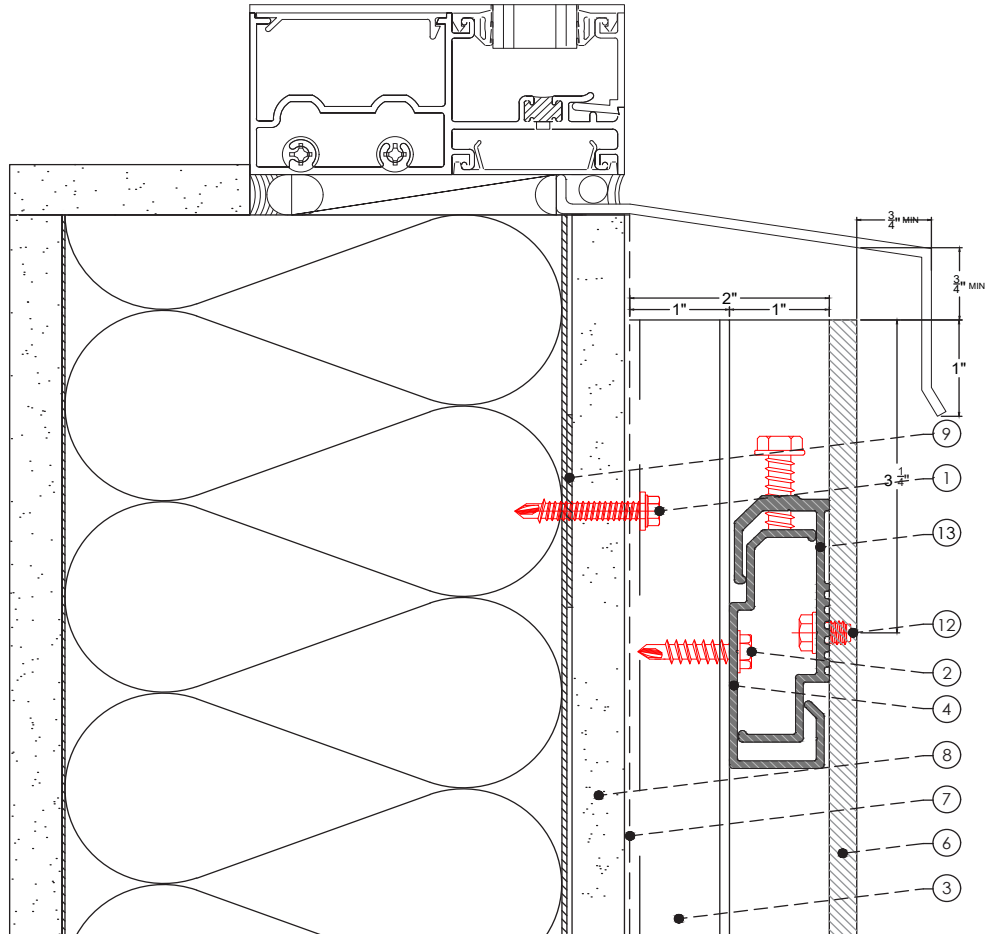
X-CS25

DETAIL:

SECTION HORIZONTAL PANEL JOINT

DETAIL SHEET:

CS25-10



LEGEND

- | | |
|--------------------------|-------------------------------------|
| ① Wall anchor | ⑨ Steel Backing Plate as required |
| ② Fixing Screw | ⑩ End profile |
| ③ X-Z25 profile | ⑪ Vent Screen 40% perf. |
| ④ X-RL25 horizontal rail | ⑫ T U Anchor |
| ⑤ Hanger Clip X-CL25 | ⑬ Hanger Clip with leveler X-CL25-L |
| ⑥ Exterior panel 10-13mm | ⑭ Level Screw |
| ⑦ A/V Barrier | ⑮ Rail anchor |
| ⑧ Exterior Wall | |

NOTES:



SYSTEM:

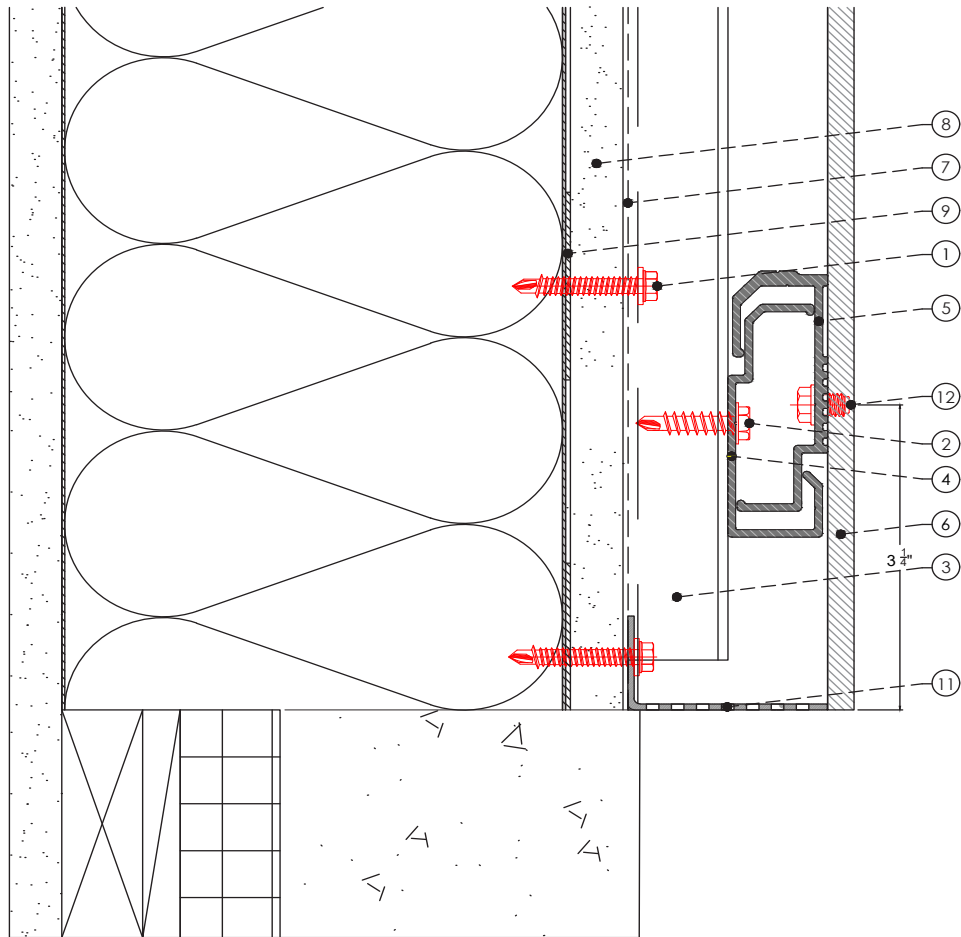
X-CS25

DETAIL:

SECTION WINDOW SILL

DETAIL SHEET:

CS25-11



LEGEND

- | | |
|--------------------------|-------------------------------------|
| ① Wall anchor | ⑨ Steel Backing Plate as required |
| ② Fixing Screw | ⑩ End profile |
| ③ X-Z25 profile | ⑪ Vent Screen 40% perf. |
| ④ X-RL25 horizontal rail | ⑫ T U Anchor |
| ⑤ Hanger Clip X-CL25 | ⑬ Hanger Clip with leveler X-CL25-L |
| ⑥ Exterior panel 10-13mm | ⑭ Level Screw |
| ⑦ A/V Barrier | ⑮ Rail anchor |
| ⑧ Exterior Wall | |

NOTES:



SYSTEM:

X-CS25

DETAIL:

SECTION BASE DETAIL

DETAIL SHEET:

CS25-12