

ALUMINIUM SUPPORT SYSTEM FOR
RAINSCREEN CLADDING
XKELEX X-H19

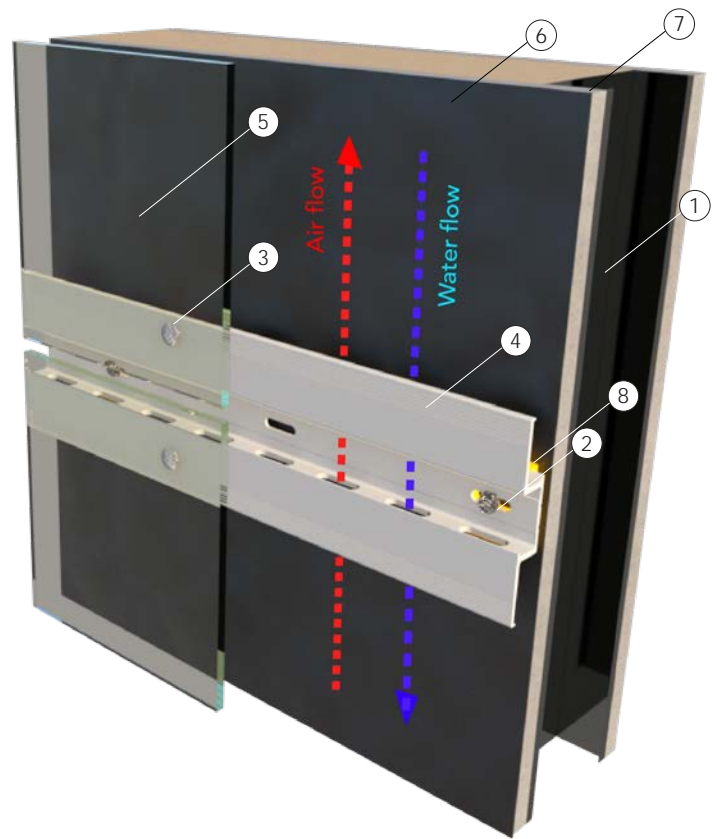


LEGEND

- 1. Steel Stud (16 GA typical)
- 2. Wall anchor
- 3. SFS Rivet or Torx head screw
- 4. X-H19PF profile
- 5. Exterior panel
- 6. A/V Barrier
- 7. Exterior Wall
- 8. X-TB6 Thermal break pad

CONTENT

- H19-00 Xkelex System detail sheet
- H19-01 Profiles
- H19-02 Building Elevation
- H19-03 Vertical Panel Joint
- H19-04 Vertical Mid Panel
- H19-05 Window Jamb
- H19-06 Door Jamb
- H19-07 Inside Corner
- H19-08 Outside Corner
- H19-09 Window Head
- H19-10 Horizontal Panel Joint
- H19-11 Window Sill
- H19-12 Base Detail



PATENTS PENDING

All intellectual property rights reserved

NOTES:



SYSTEM:

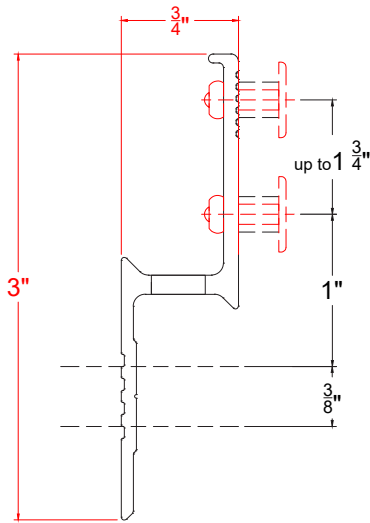
X-H19

DETAIL:

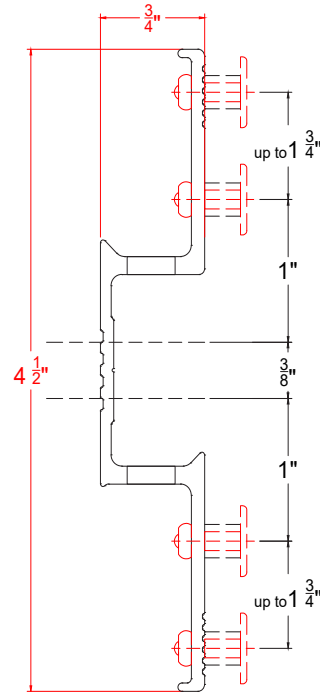
XKELEX SYSTEM

DETAIL SHEET:

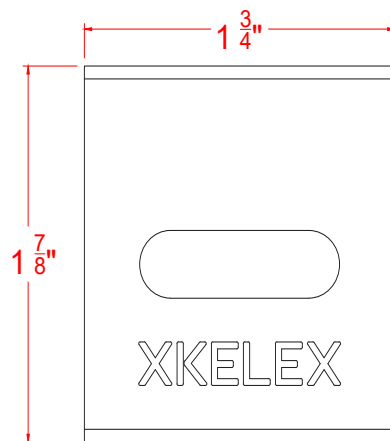
H19-00



X-Z19PF PROFILE



X-H19PF PROFILE



X-TB6

PATENTS PENDING
All intellectual property rights reserved

NOTES:



SYSTEM:

X-H19

DETAIL:

PROFILES

DETAIL SHEET:

H19-01



PATENTS PENDING
All intellectual property rights reserved

NOTES:



SYSTEM:

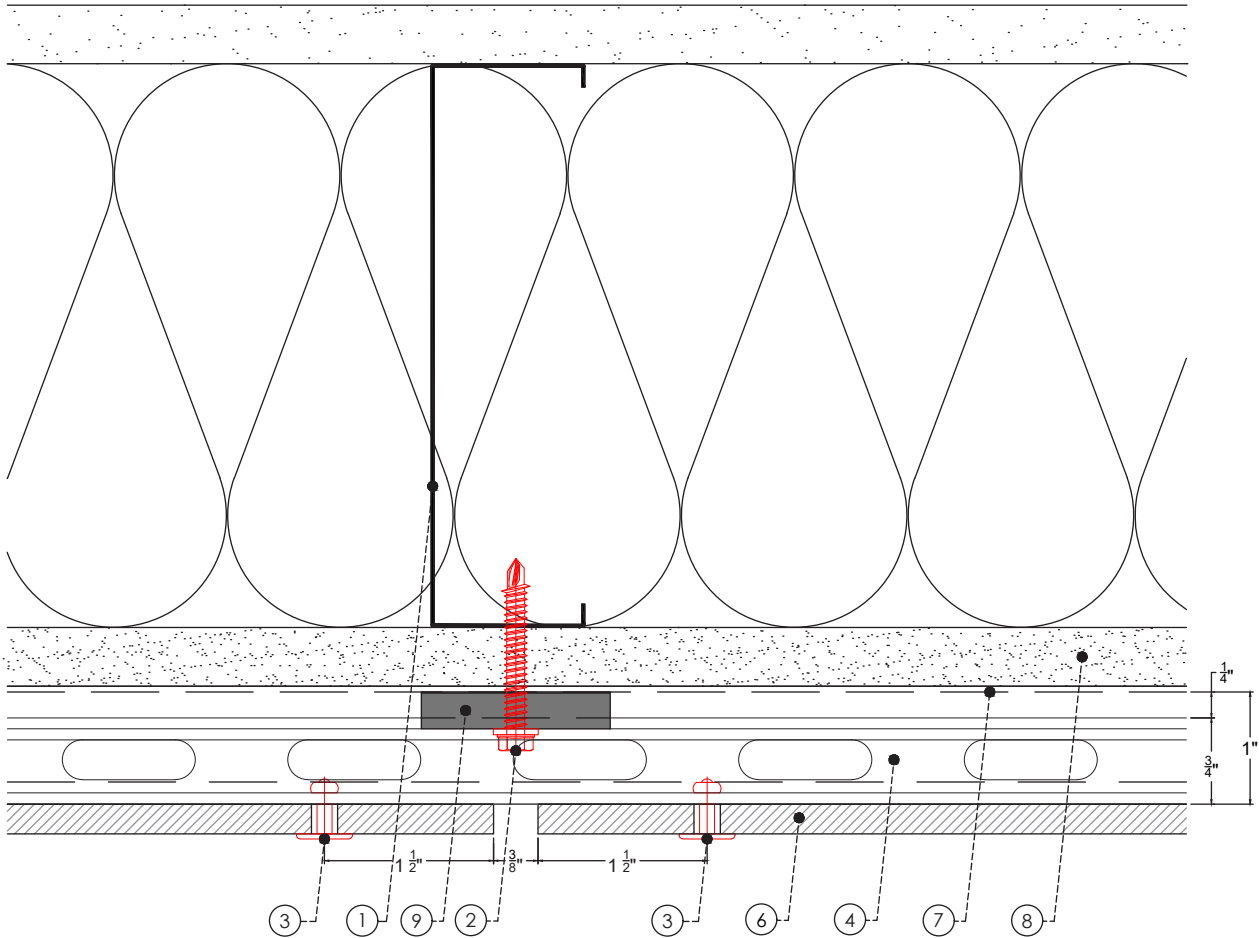
X-H19

DETAIL:

BUILDING ELEVATION

DETAIL SHEET:

H19-02



LEGEND

- | | |
|--------------------------------|---------------------------|
| ① Steel Stud (16 GA typical) | ⑦ A/V Barrier |
| ② Wall anchor | ⑧ Exterior Wall |
| ③ SFS Rivet or Torx head screw | ⑨ X-TB6 Thermal break pad |
| ④ X-H19PF profile | ⑩ End profile |
| ⑤ X-Z19PF profile | ⑪ Vent Screen 40% perf. |
| ⑥ Exterior panel 8-10mm | |

PATENTS PENDING
All intellectual property rights reserved

NOTES:



SYSTEM:

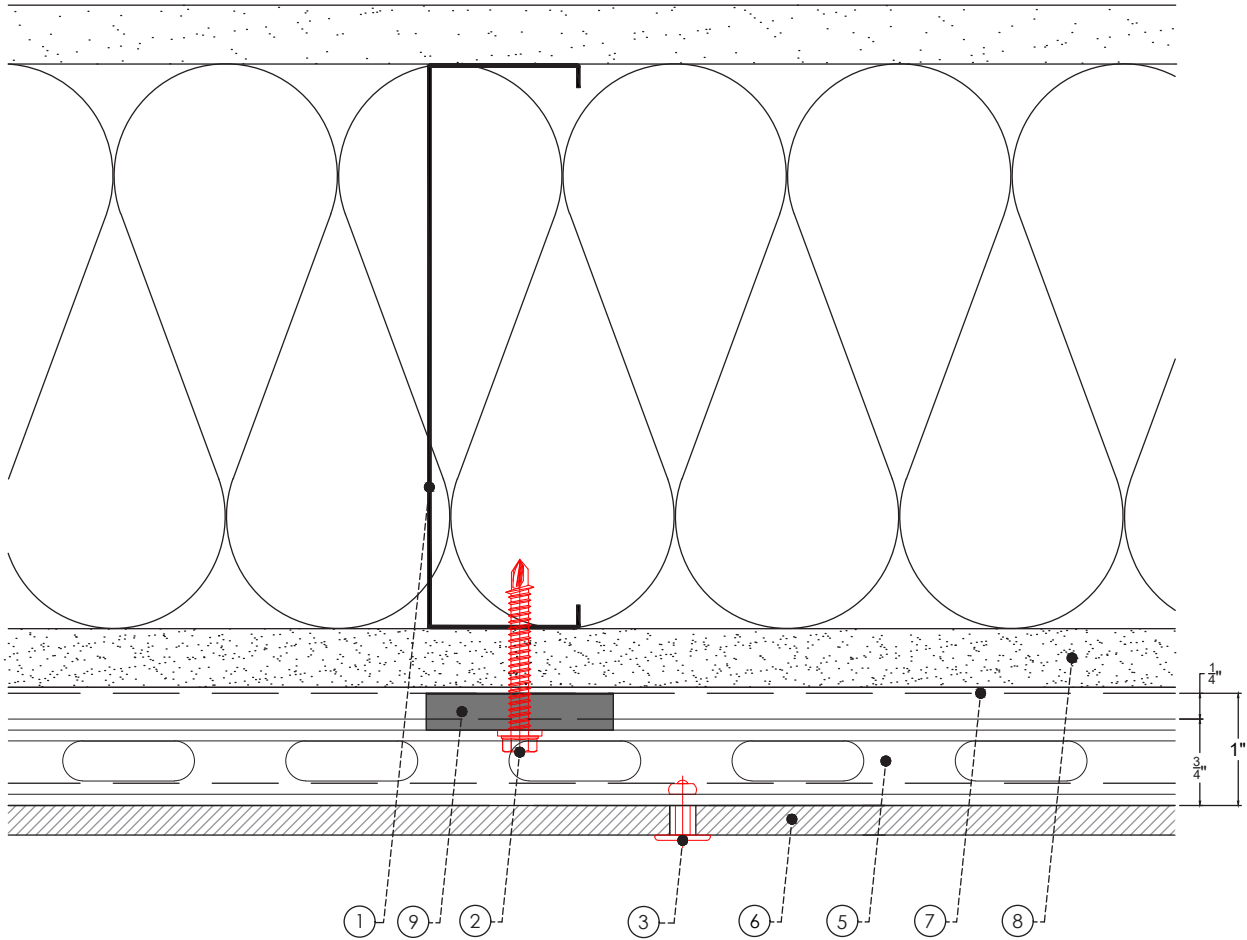
X-H19

DETAIL:

PLAN VIEW VERTICAL PANEL JOINT

DETAIL SHEET:

H19-03



LEGEND

- | | |
|--------------------------------|---------------------------|
| ① Steel Stud (16 GA typical) | ⑦ A/V Barrier |
| ② Wall anchor | ⑧ Exterior Wall |
| ③ SFS Rivet or Torx head screw | ⑨ X-TB6 Thermal break pad |
| ④ X-H19PF profile | ⑩ End profile |
| ⑤ X-Z19PF profile | ⑪ Vent Screen 40% perf. |
| ⑥ Exterior panel 8-10mm | |

PATENTS PENDING
All intellectual property rights reserved

NOTES:



SYSTEM:

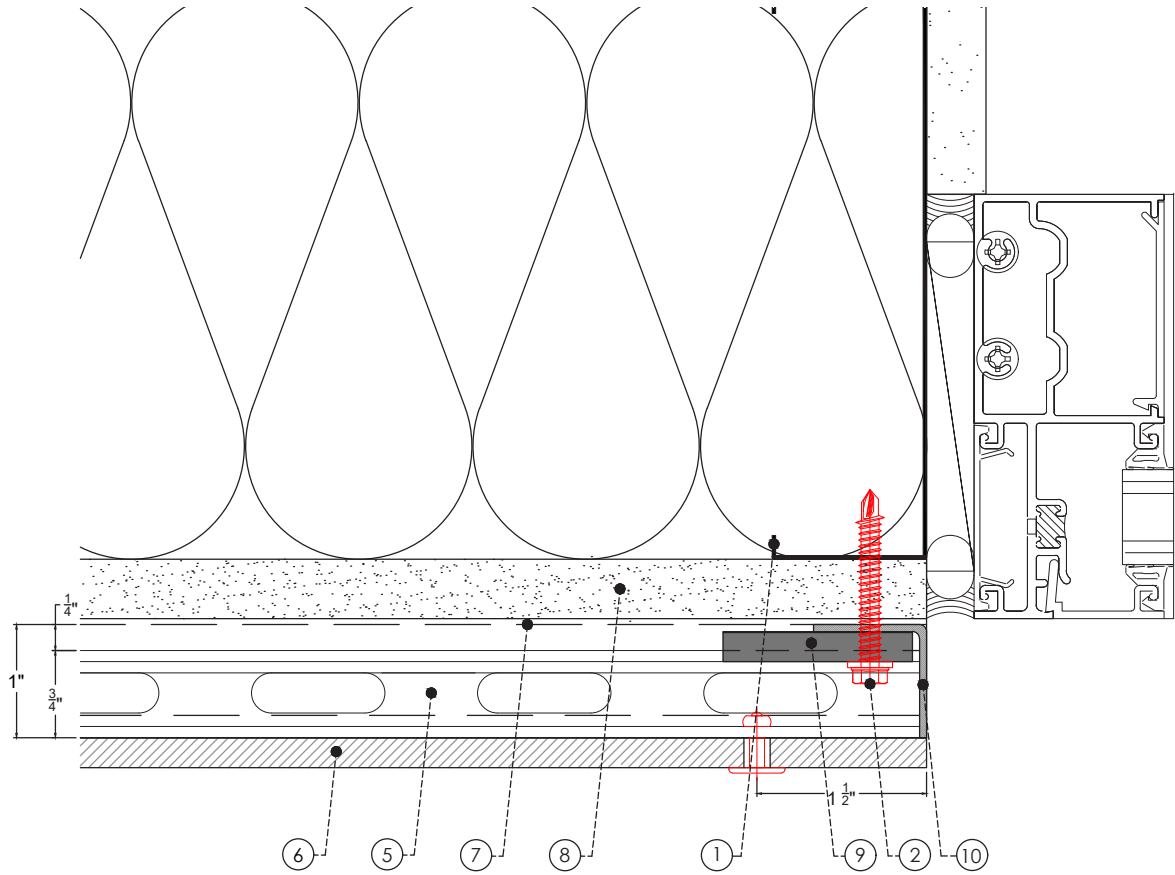
X-H19

DETAIL:

PLAN VIEW MID PANEL

DETAIL SHEET:

H19-04



LEGEND

- | | |
|--------------------------------|---------------------------|
| ① Steel Stud (16 GA typical) | ⑦ A/V Barrier |
| ② Wall anchor | ⑧ Exterior Wall |
| ③ SFS Rivet or Torx head screw | ⑨ X-TB6 Thermal break pad |
| ④ X-H19PF profile | ⑩ End profile |
| ⑤ X-Z19PF profile | ⑪ Vent Screen 40% perf. |
| ⑥ Exterior panel 8-10mm | |

PATENTS PENDING
All intellectual property rights reserved

NOTES:



SYSTEM:

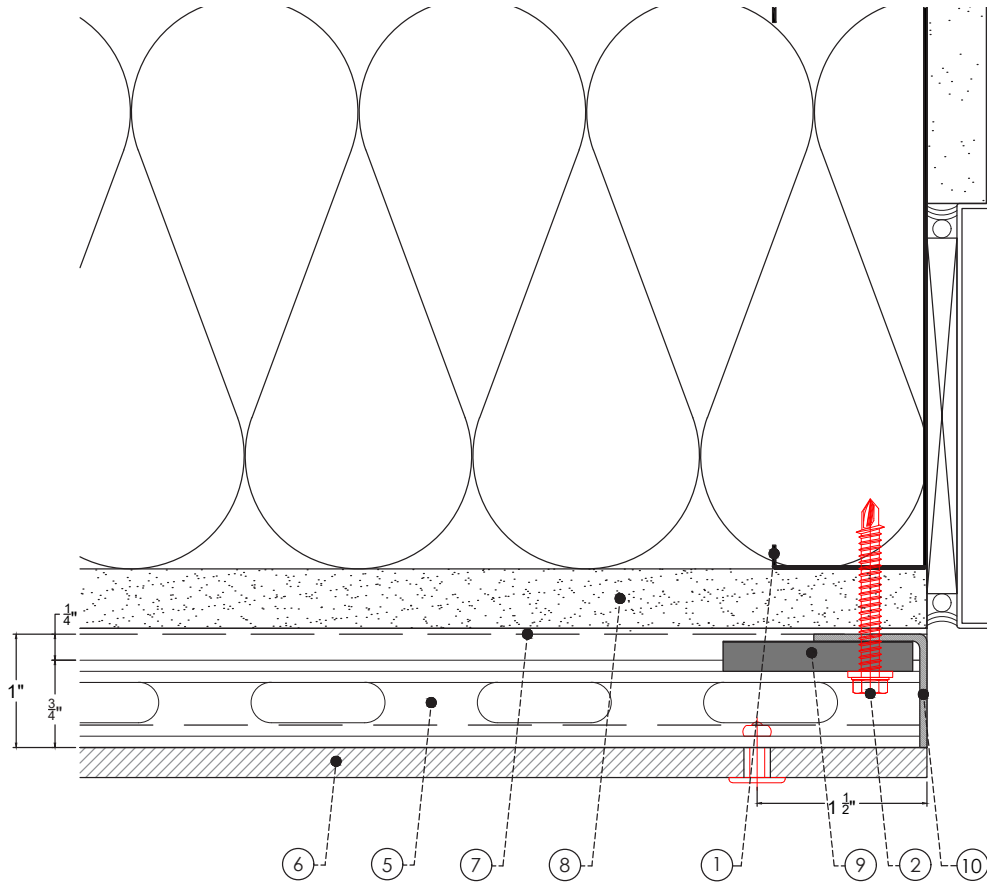
X-H19

DETAIL:

PLAN VIEW WINDOW JAMB

DETAIL SHEET:

H19-05



LEGEND

- | | |
|--------------------------------|---------------------------|
| ① Steel Stud (16 GA typical) | ⑦ A/V Barrier |
| ② Wall anchor | ⑧ Exterior Wall |
| ③ SFS Rivet or Torx head screw | ⑨ X-TB6 Thermal break pad |
| ④ X-H19PF profile | ⑩ End profile |
| ⑤ X-Z19PF profile | ⑪ Vent Screen 40% perf. |
| ⑥ Exterior panel 8-10mm | |

PATENTS PENDING
All intellectual property rights reserved

NOTES:



SYSTEM:

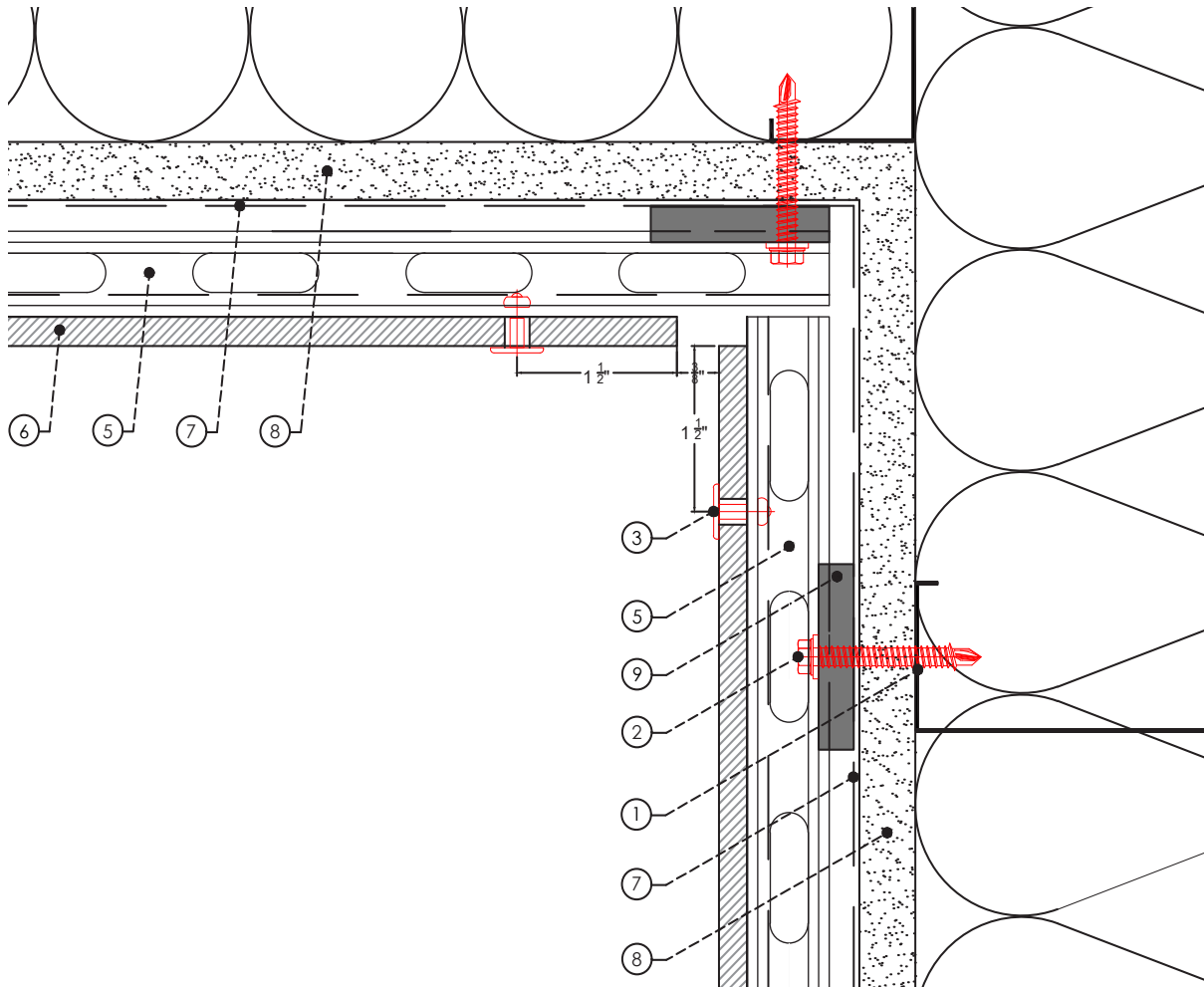
X-H19

DETAIL:

PLAN VIEW DOOR JAMB

DETAIL SHEET:

H19-06



LEGEND

- | | |
|--------------------------------|---------------------------|
| ① Steel Stud (16 GA typical) | ⑦ A/V Barrier |
| ② Wall anchor | ⑧ Exterior Wall |
| ③ SFS Rivet or Torx head screw | ⑨ X-TB6 Thermal break pad |
| ④ X-H19PF profile | ⑩ End profile |
| ⑤ X-Z19PF profile | ⑪ Vent Screen 40% perf. |
| ⑥ Exterior panel 8-10mm | |

PATENTS PENDING
All intellectual property rights reserved

NOTES:



SYSTEM:

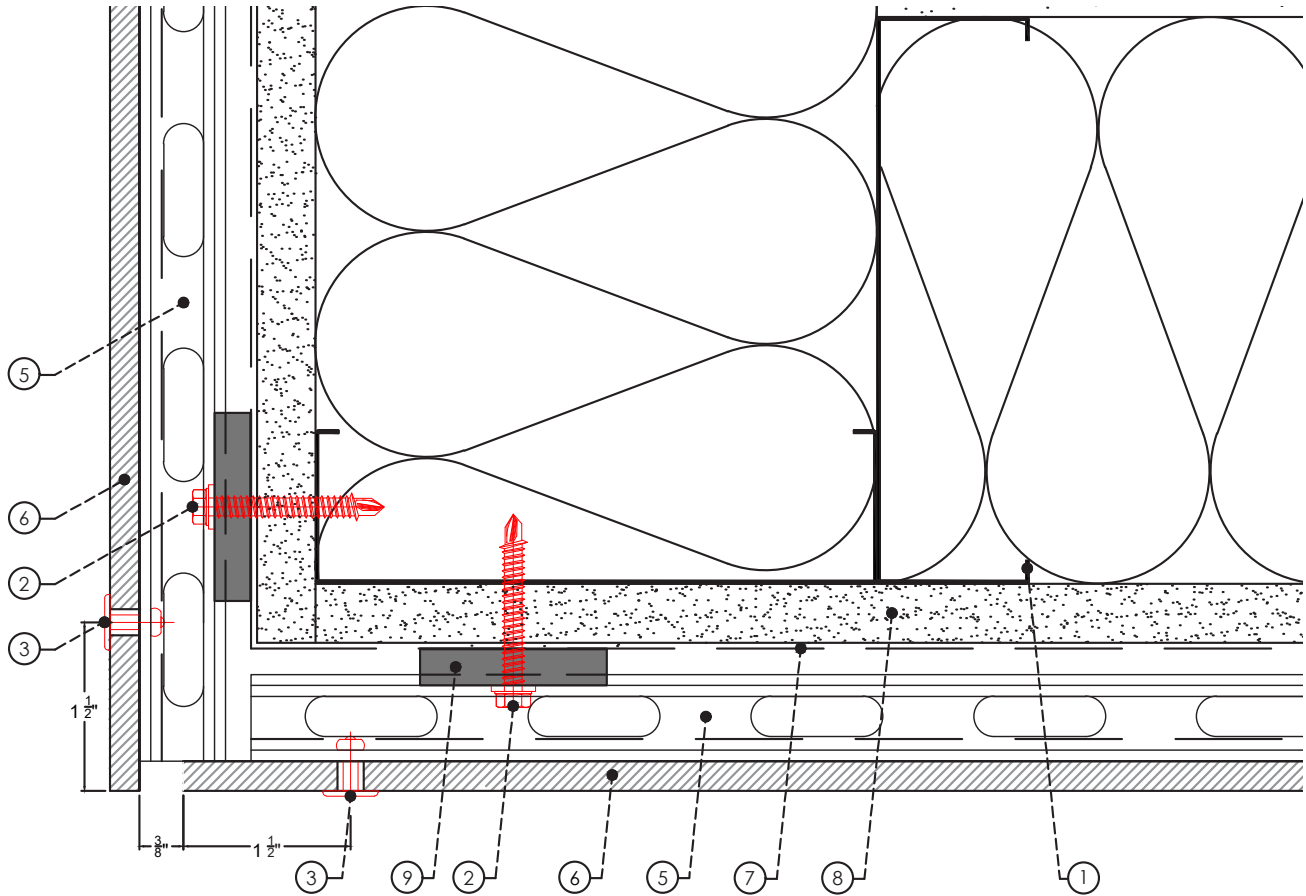
X-H19

DETAIL:

PLAN VIEW INSIDE CORNER

DETAIL SHEET:

H19-07



LEGEND

- | | |
|--------------------------------|---------------------------|
| ① Steel Stud (16 GA typical) | ⑦ A/V Barrier |
| ② Wall anchor | ⑧ Exterior Wall |
| ③ SFS Rivet or Torx head screw | ⑨ X-TB6 Thermal break pad |
| ④ X-H19PF profile | ⑩ End profile |
| ⑤ X-Z19PF profile | ⑪ Vent Screen 40% perf. |
| ⑥ Exterior panel 8-10mm | |

PATENTS PENDING
All intellectual property rights reserved

NOTES:



SYSTEM:

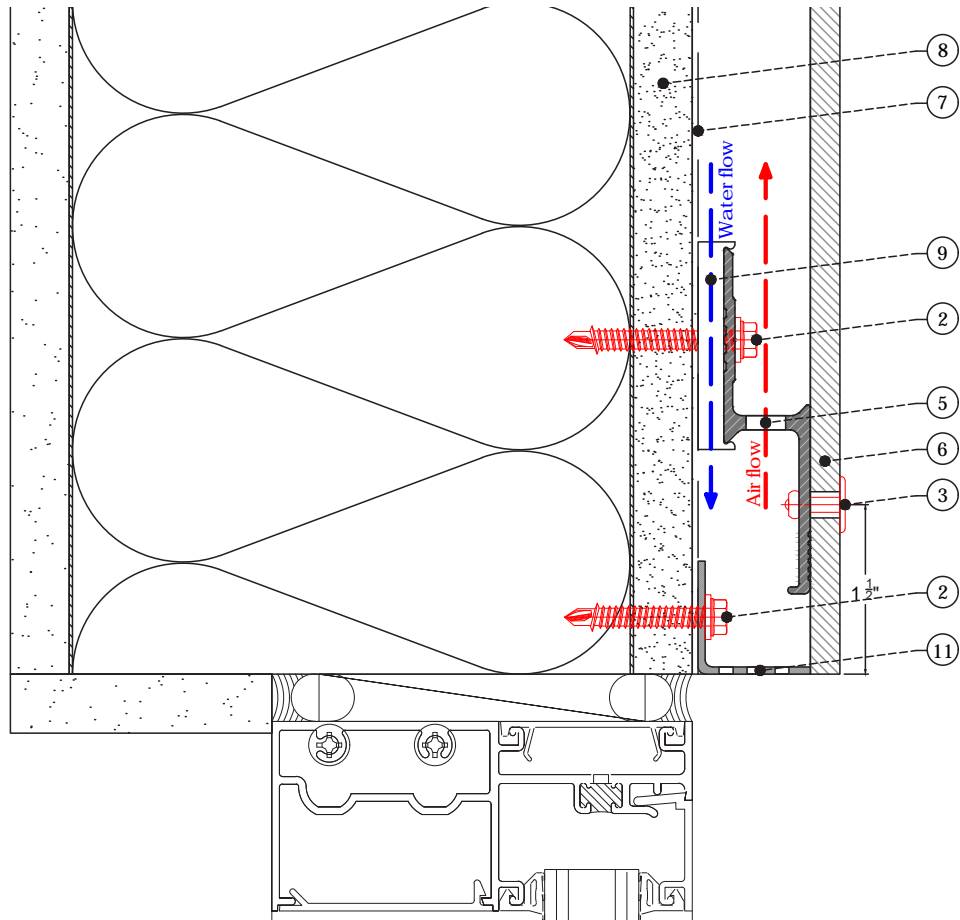
X-H19

DETAIL:

PLAN VIEW OUTSIDE CORNER

DETAIL SHEET:

H19-08



LEGEND

- | | |
|--------------------------------|---------------------------|
| ① Steel Stud (16 GA typical) | ⑦ A/V Barrier |
| ② Wall anchor | ⑧ Exterior Wall |
| ③ SFS Rivet or Torx head screw | ⑨ X-TB6 Thermal break pad |
| ④ X-H19PF profile | ⑩ End profile |
| ⑤ X-Z19PF profile | ⑪ Vent Screen 40% perf. |
| ⑥ Exterior panel 8-10mm | |

PATENTS PENDING
All intellectual property rights reserved

NOTES:



SYSTEM:

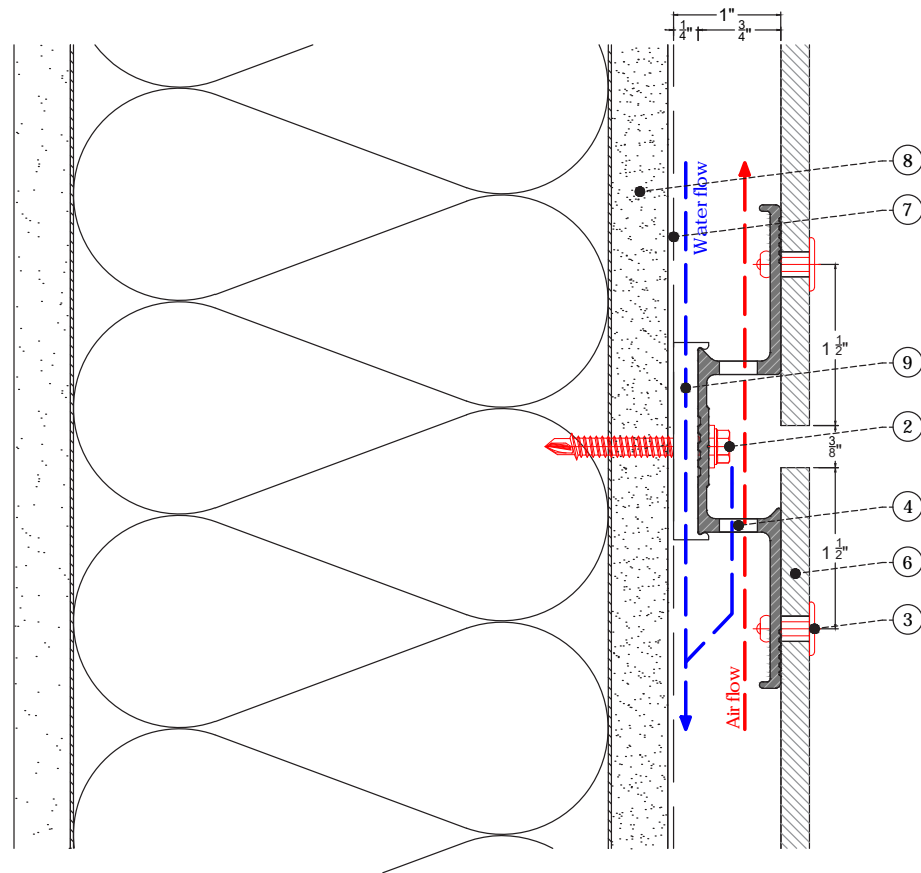
X-H19

DETAIL:

SECTION WINDOW HEAD

DETAIL SHEET:

H19-09



LEGEND

- | | |
|--------------------------------|---------------------------|
| ① Steel Stud (16 GA typical) | ⑦ A/V Barrier |
| ② Wall anchor | ⑧ Exterior Wall |
| ③ SFS Rivet or Torx head screw | ⑨ X-TB6 Thermal break pad |
| ④ X-H19PF profile | ⑩ End profile |
| ⑤ X-Z19PF profile | ⑪ Vent Screen 40% perf. |
| ⑥ Exterior panel 8-10mm | |

PATENTS PENDING
All intellectual property rights reserved

NOTES:



SYSTEM:

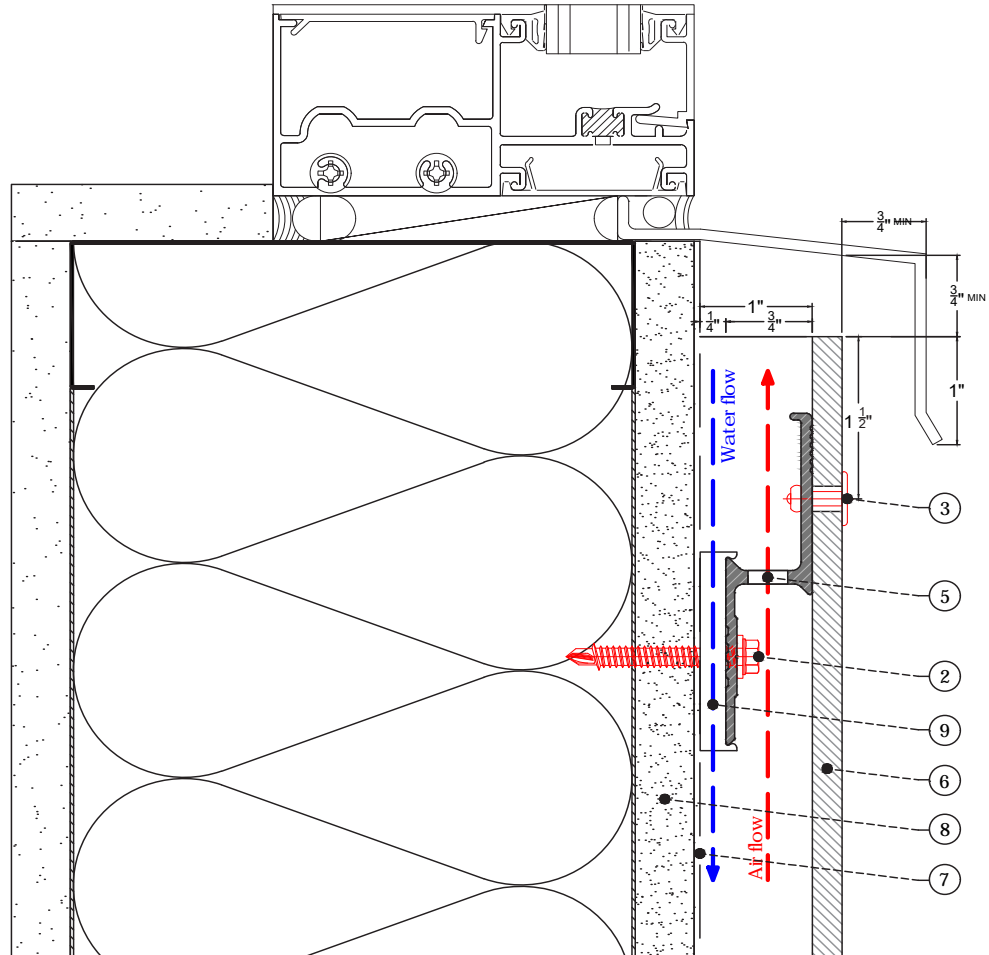
X-H19

DETAIL:

SECTION HORIZONTAL PANEL JOINT

DETAIL SHEET:

H19-10



LEGEND

- | | |
|--------------------------------|---------------------------|
| ① Steel Stud (16 GA typical) | ⑦ A/V Barrier |
| ② Wall anchor | ⑧ Exterior Wall |
| ③ SFS Rivet or Torx head screw | ⑨ X-TB6 Thermal break pad |
| ④ X-H19PF profile | ⑩ End profile |
| ⑤ X-Z19PF profile | ⑪ Vent Screen 40% perf. |
| ⑥ Exterior panel 8-10mm | |

PATENTS PENDING
All intellectual property rights reserved

NOTES:



SYSTEM:

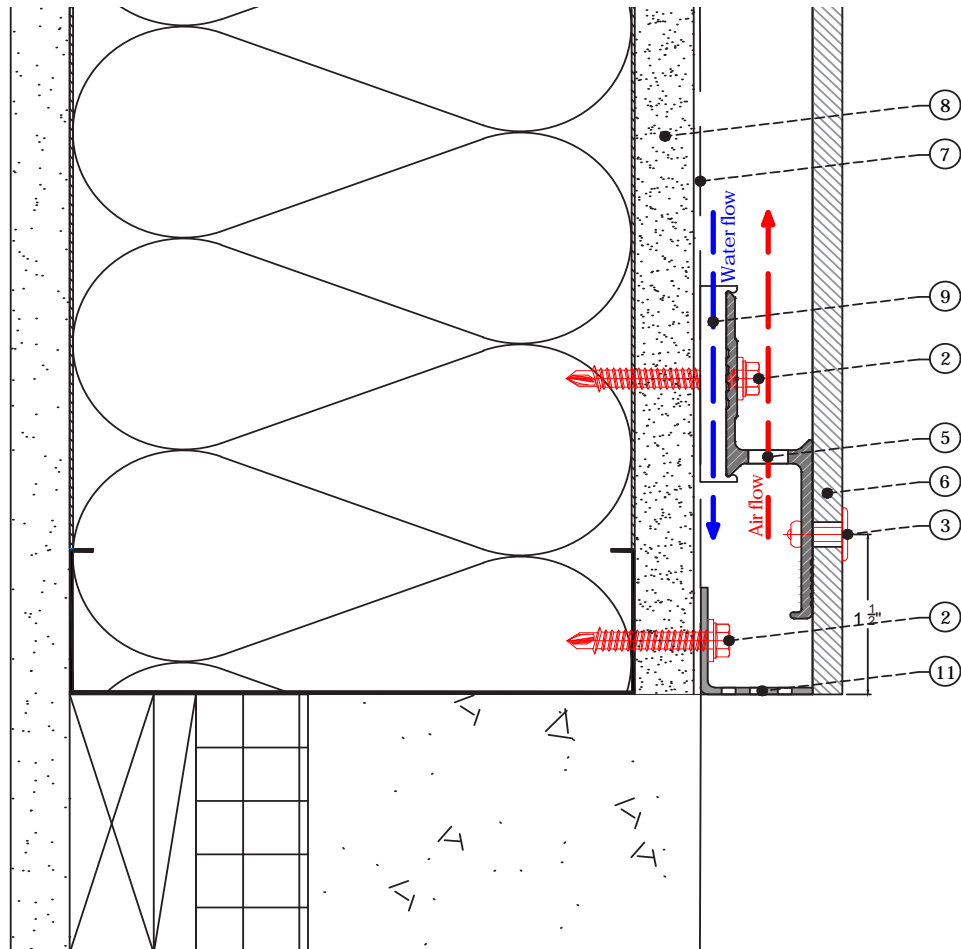
X-H19

DETAIL:

SECTION WINDOW SILL

DETAIL SHEET:

H19-11



LEGEND

- | | |
|--------------------------------|---------------------------|
| ① Steel Stud (16 GA typical) | ⑦ A/V Barrier |
| ② Wall anchor | ⑧ Exterior Wall |
| ③ SFS Rivet or Torx head screw | ⑨ X-TB6 Thermal break pad |
| ④ X-H19PF profile | ⑩ End profile |
| ⑤ X-Z19PF profile | ⑪ Vent Screen 40% perf. |
| ⑥ Exterior panel 8-10mm | |

PATENTS PENDING
All intellectual property rights reserved

NOTES:



SYSTEM:

X-H19

DETAIL:

SECTION BASE DETAIL

DETAIL SHEET:

H19-12