

**ALUMINIUM SUPPORT SYSTEM FOR  
RAINSCREEN CLADDING  
XKELEX X-V25**

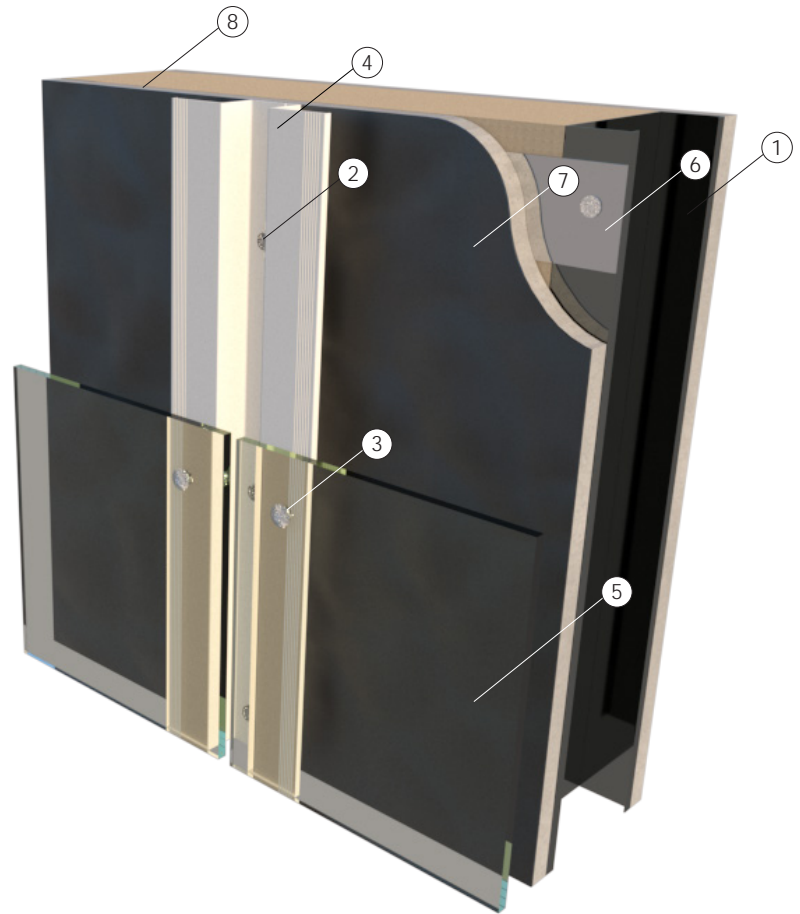


**LEGEND**

- 1. Steel Stud (16 GA typical)
- 2. Wall anchor
- 3. SFS Rivet or Torx head screw
- 4. X-H25 profile
- 5. Exterior Panel
- 6. Steel Backing Plate
- 7. A/V Barrier
- 8. Exterior Wall

**CONTENT**

- V25-00 Xkelex System detail sheet
- V25-01 Profiles
- V25-02 Building Elevation
- V25-03 Vertical Panel Joint
- V25-04 Vertical Mid Panel
- V25-05 Window Jamb
- V25-06 Door Jamb
- V25-07 Inside Corner
- V25-08 Outside Corner
- V25-09 Window Head
- V25-10 Horizontal Panel Joint
- V25-11 Window Sill
- V25-12 Base Detail



NOTES:

---



---



---



---



SYSTEM:

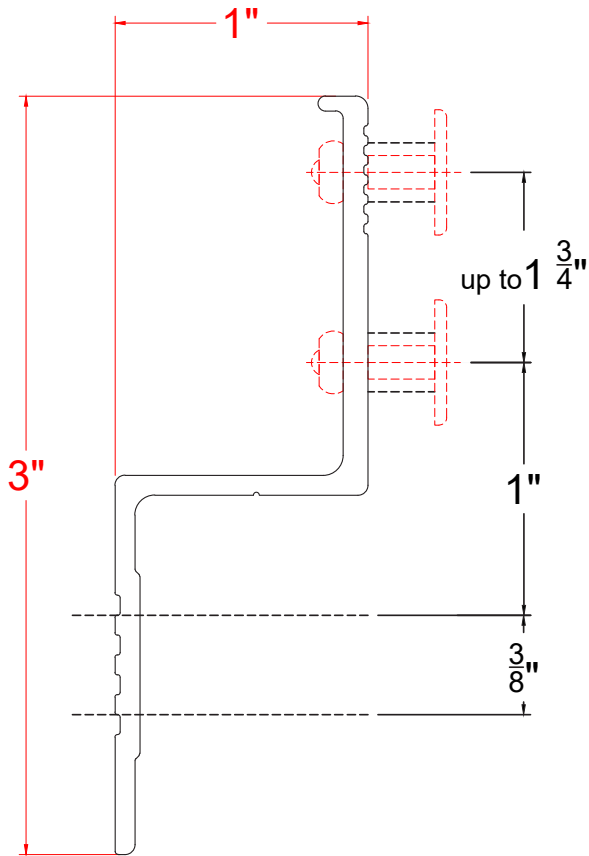
X-V25

DETAIL:

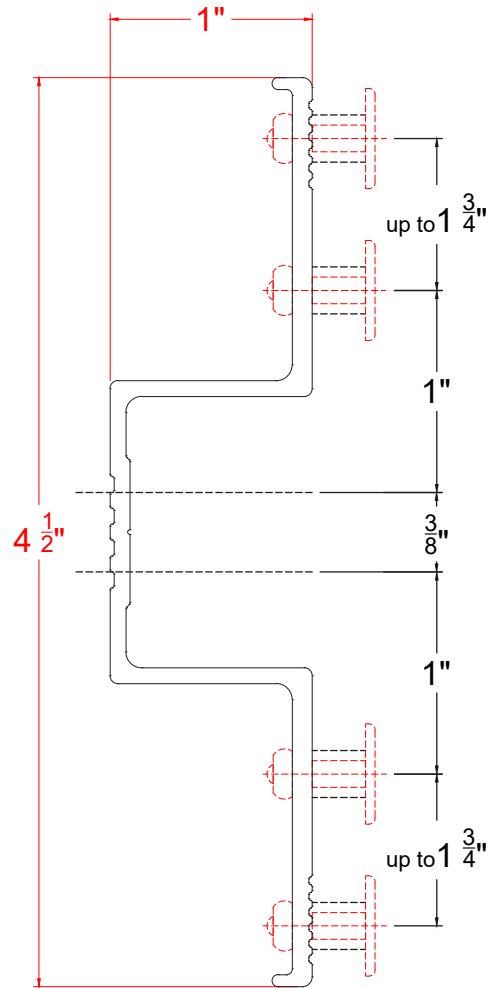
XKELEX SYSTEM

DETAIL SHEET:

V25-00



X-Z25 PROFILE



X-H25 PROFILE

NOTES:

---



---



---



---



SYSTEM:

X-V25

DETAIL:

PROFILES

DETAIL SHEET:

V25-01



NOTES:




SYSTEM:

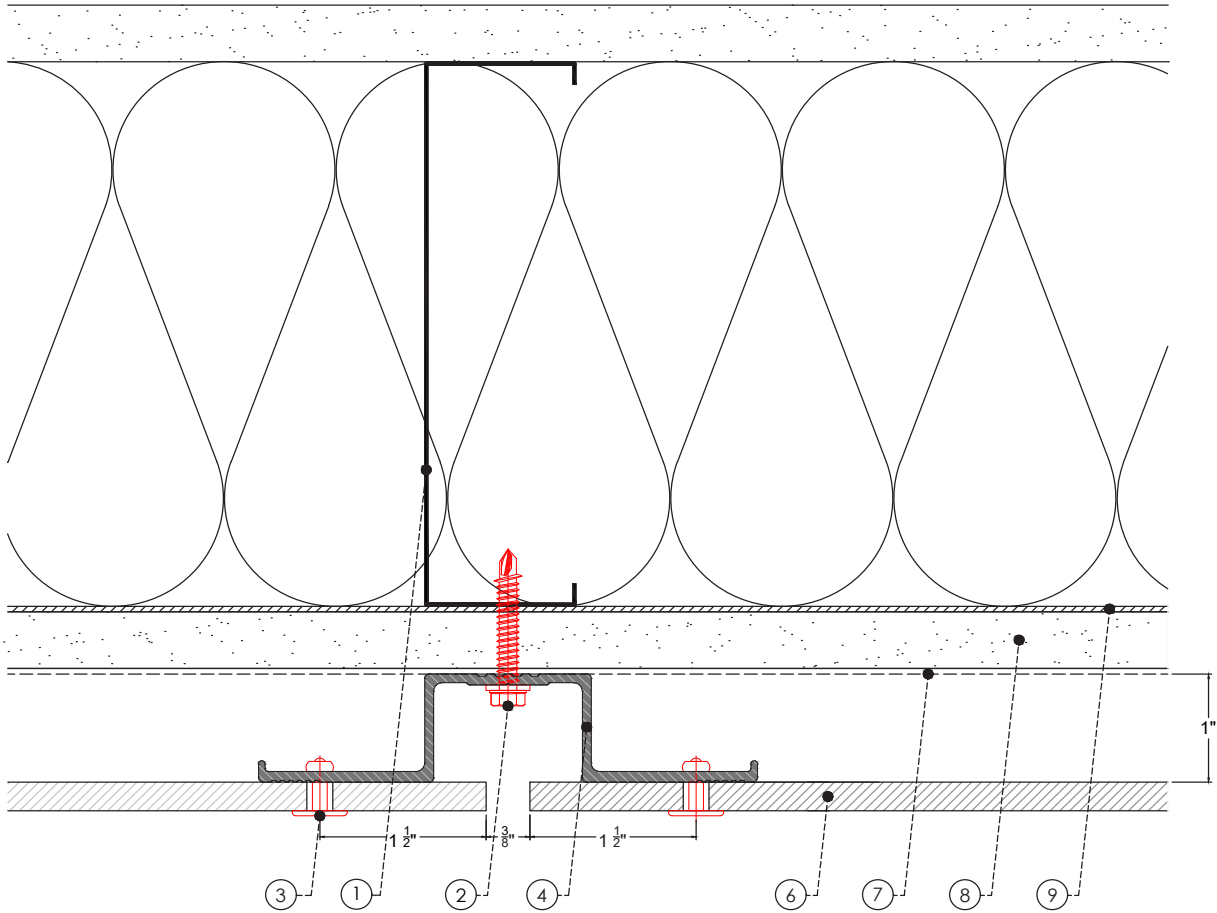
X-V25

DETAIL:

BUILDING ELEVATION

DETAIL SHEET:

V25-02



**LEGEND**

- |                                |                                   |
|--------------------------------|-----------------------------------|
| ① Steel Stud (16 GA typical)   | ⑦ A/V Barrier                     |
| ② Wall anchor                  | ⑧ Exterior Wall                   |
| ③ SFS Rivet or Torx head screw | ⑨ Steel Backing Plate as required |
| ④ X-H25 profile                | ⑩ End profile                     |
| ⑤ X-Z25 profile                | ⑪ Vent Screen 40% perf.           |
| ⑥ Exterior panel 8-10mm        |                                   |

NOTES:

---



---



---



---



---



SYSTEM:

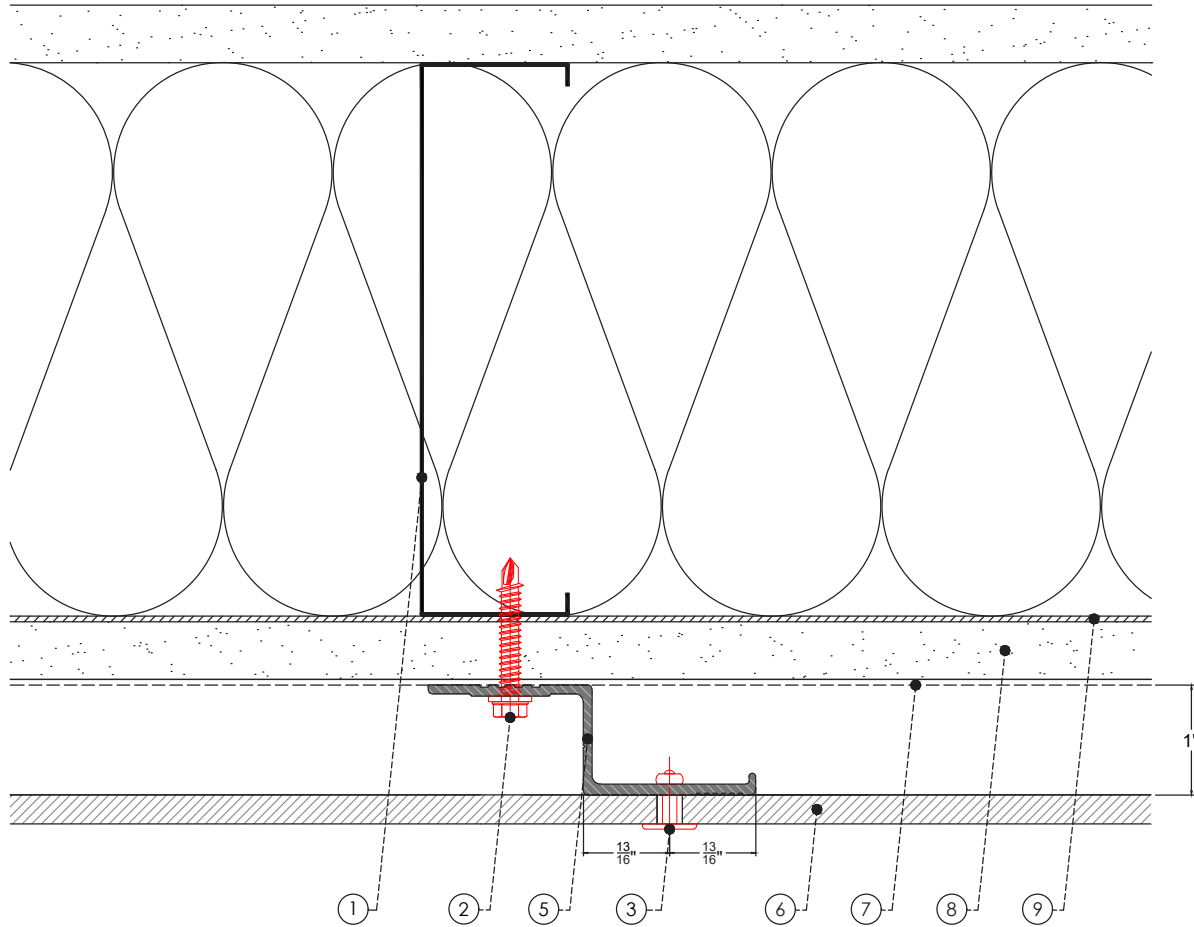
X-V25

DETAIL:

PLAN VIEW VERTICAL PANEL JOINT

DETAIL SHEET:

V25-03



**LEGEND**

- |                                |                                   |
|--------------------------------|-----------------------------------|
| ① Steel Stud (16 GA typical)   | ⑦ A/V Barrier                     |
| ② Wall anchor                  | ⑧ Exterior Wall                   |
| ③ SFS Rivet or Torx head screw | ⑨ Steel Backing Plate as required |
| ④ X-H25 profile                | ⑩ End profile                     |
| ⑤ X-Z25 profile                | ⑪ Vent Screen 40% perf.           |
| ⑥ Exterior panel 8-10mm        |                                   |

NOTES:

---



---



---



---



---



SYSTEM:

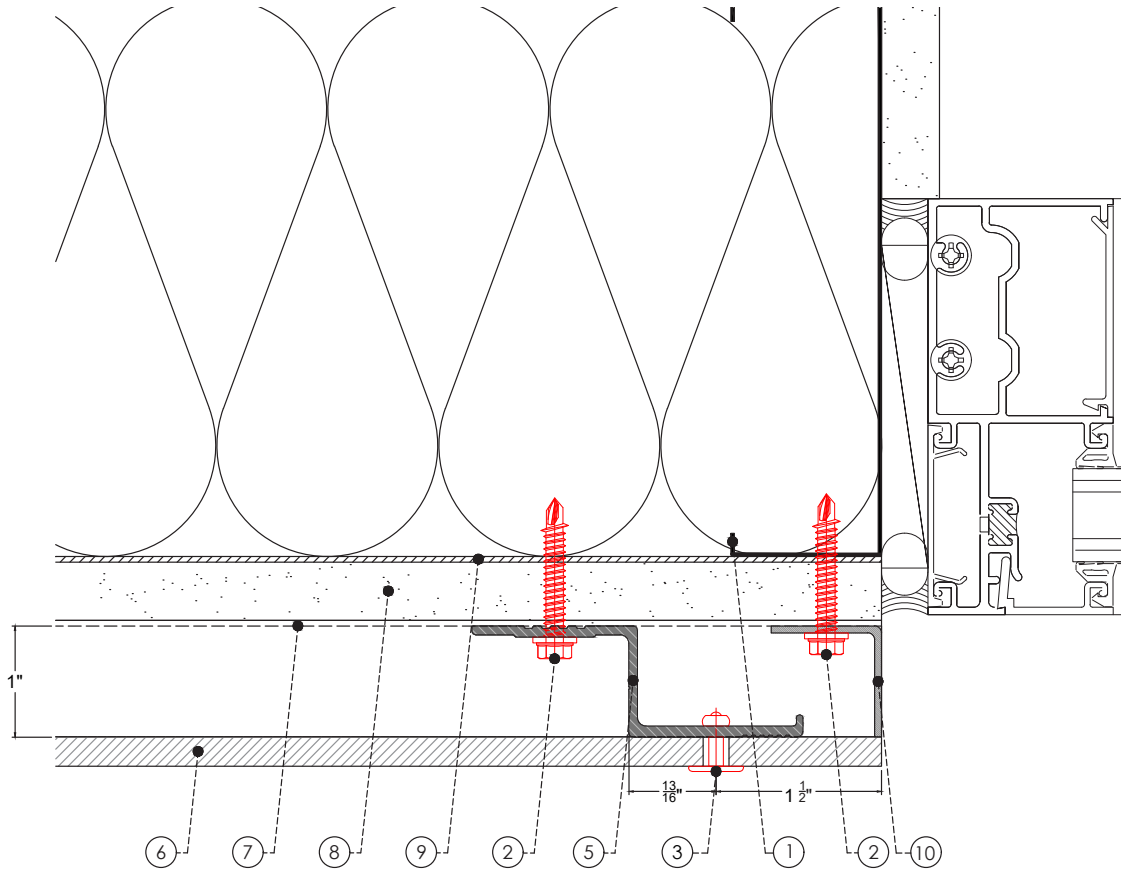
X-V25

DETAIL:

PLAN VIEW MID PANEL

DETAIL SHEET:

V25-04



**LEGEND**

- |                                |                                   |
|--------------------------------|-----------------------------------|
| ① Steel Stud (16 GA typical)   | ⑦ A/V Barrier                     |
| ② Wall anchor                  | ⑧ Exterior Wall                   |
| ③ SFS Rivet or Torx head screw | ⑨ Steel Backing Plate as required |
| ④ X-H25 profile                | ⑩ End profile                     |
| ⑤ X-Z25 profile                | ⑪ Vent Screen 40% perf.           |
| ⑥ Exterior panel 8-10mm        |                                   |

NOTES:

---



---



---



---



SYSTEM:

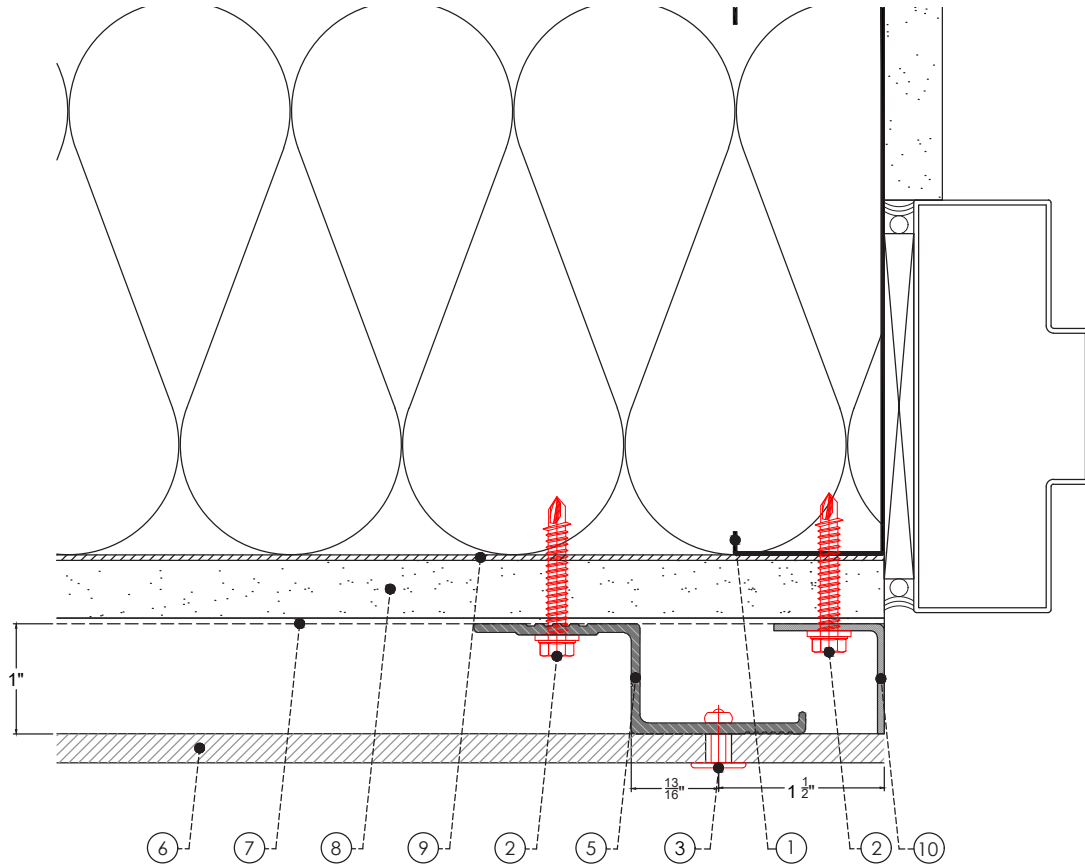
X-V25

DETAIL:

PLAN VIEW WINDOW JAMB

DETAIL SHEET:

V25-05



**LEGEND**

- |                                |                                   |
|--------------------------------|-----------------------------------|
| ① Steel Stud (16 GA typical)   | ⑦ A/V Barrier                     |
| ② Wall anchor                  | ⑧ Exterior Wall                   |
| ③ SFS Rivet or Torx head screw | ⑨ Steel Backing Plate as required |
| ④ X-H25 profile                | ⑩ End profile                     |
| ⑤ X-Z25 profile                | ⑪ Vent Screen 40% perf.           |
| ⑥ Exterior panel 8-10mm        |                                   |

NOTES:

---



---



---



---



---



SYSTEM:

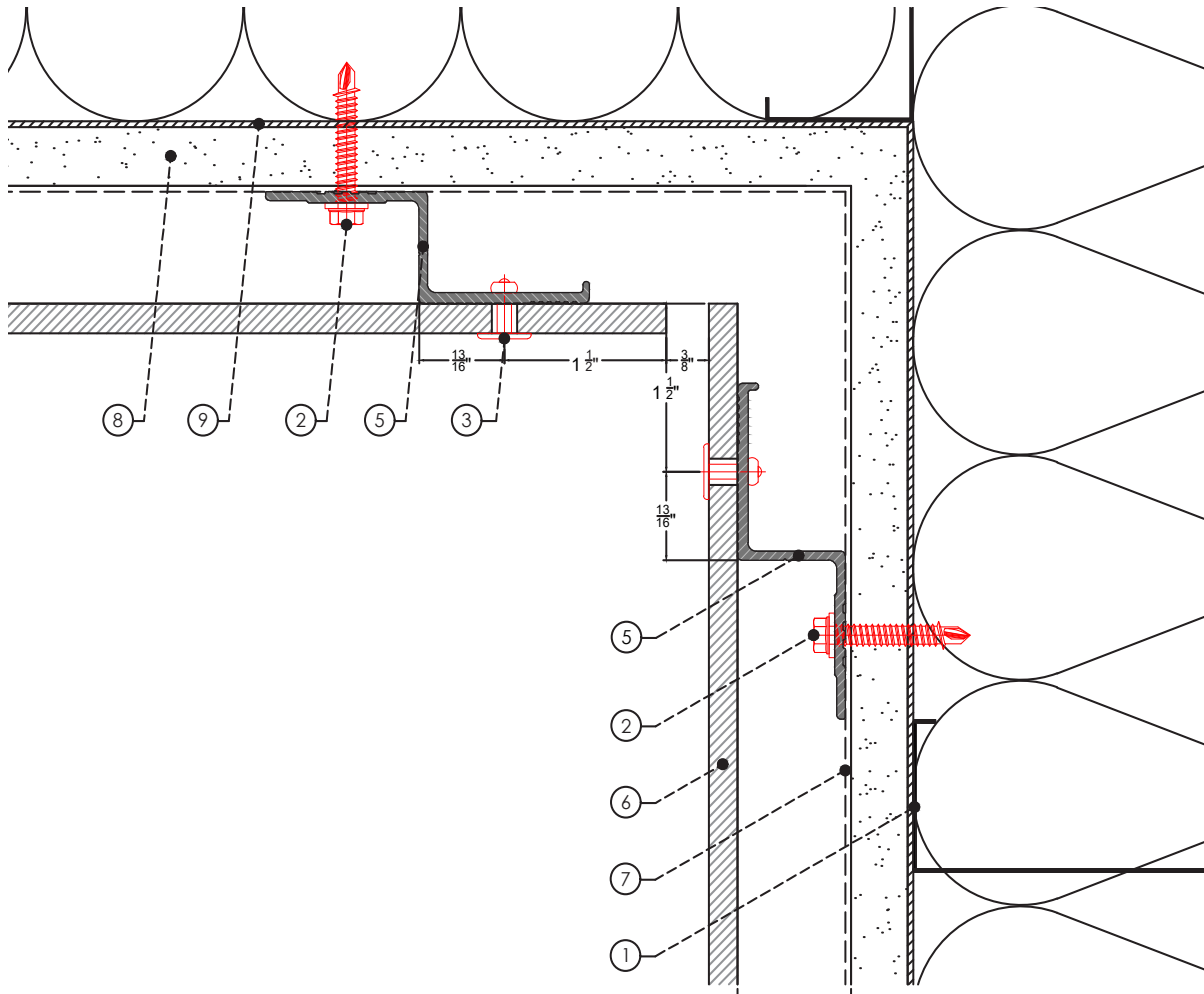
X-V25

DETAIL:

PLAN VIEW DOOR JAMB

DETAIL SHEET:

V25-06



**LEGEND**

- |                                |                                   |
|--------------------------------|-----------------------------------|
| ① Steel Stud (16 GA typical)   | ⑦ A/V Barrier                     |
| ② Wall anchor                  | ⑧ Exterior Wall                   |
| ③ SFS Rivet or Torx head screw | ⑨ Steel Backing Plate as required |
| ④ X-H25 profile                | ⑩ End profile                     |
| ⑤ X-Z25 profile                | ⑪ Vent Screen 40% perf.           |
| ⑥ Exterior panel 8-10mm        |                                   |

NOTES:

---



---



---



---



---



SYSTEM:

X-V25

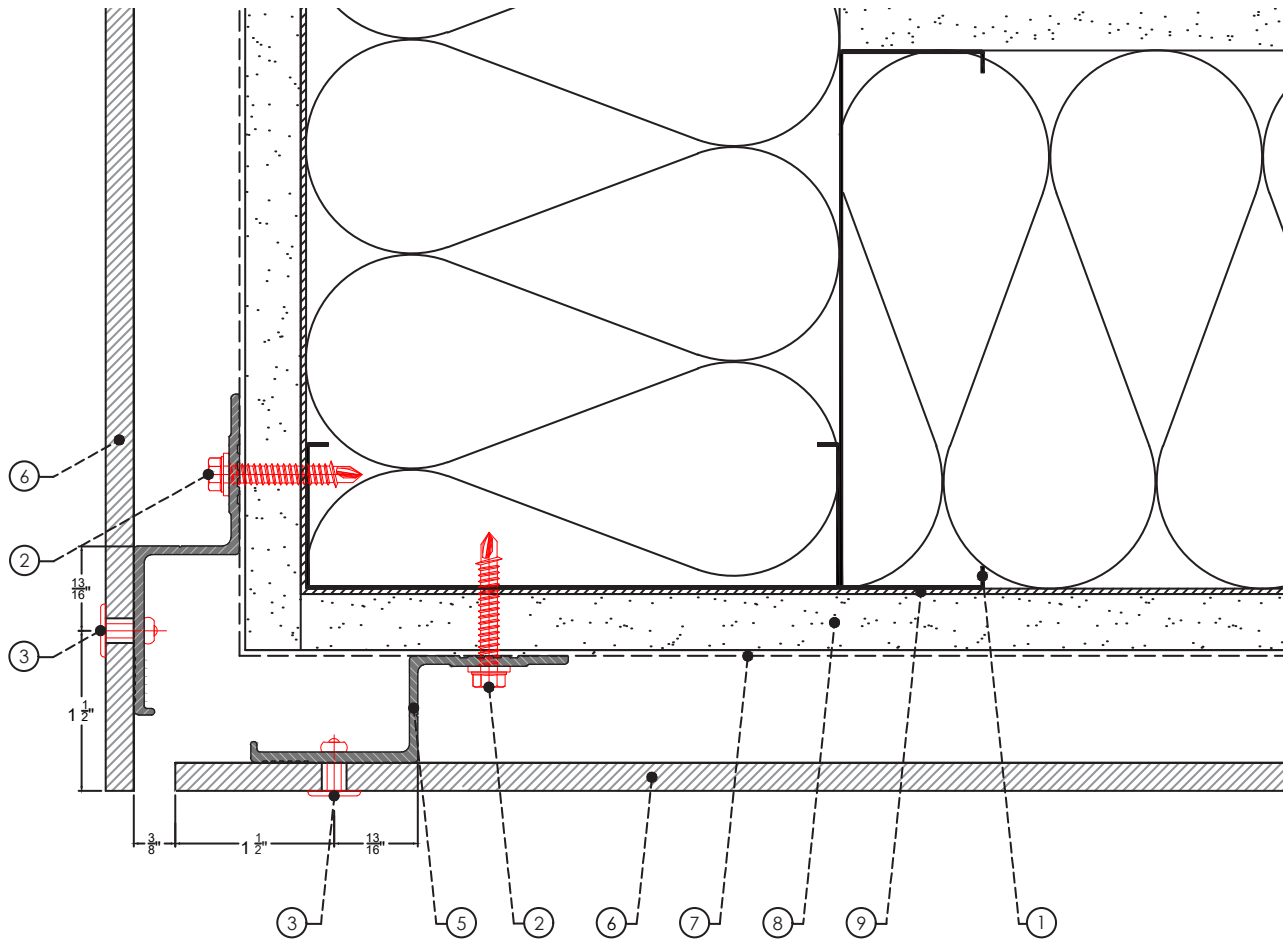
DETAIL:

PLAN VIEW INSIDE CORNER

DETAIL SHEET:

V25-07





**LEGEND**

- |                                |                                   |
|--------------------------------|-----------------------------------|
| ① Steel Stud (16 GA typical)   | ⑦ A/V Barrier                     |
| ② Wall anchor                  | ⑧ Exterior Wall                   |
| ③ SFS Rivet or Torx head screw | ⑨ Steel Backing Plate as required |
| ④ X-H25 profile                | ⑩ End profile                     |
| ⑤ X-Z25 profile                | ⑪ Vent Screen 40% perf.           |
| ⑥ Exterior panel 8-10mm        |                                   |

NOTES:

---



---



---



---



SYSTEM:

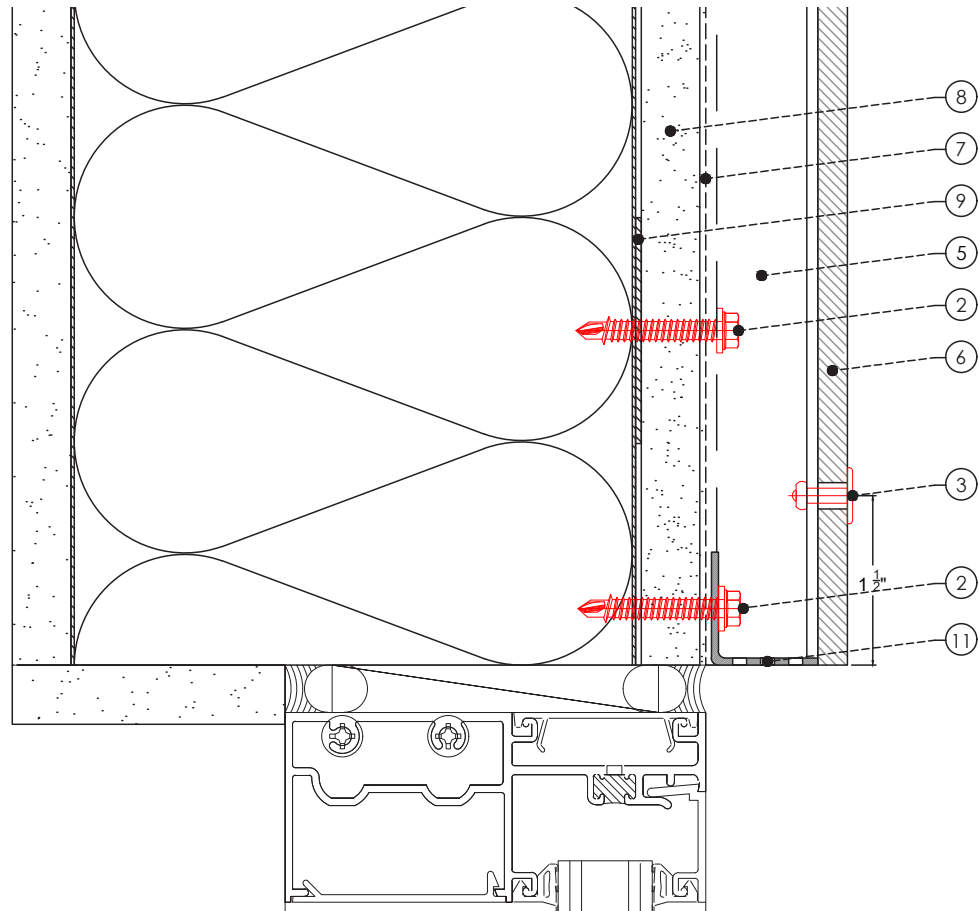
X-V25

DETAIL:

PLAN VIEW OUTSIDE CORNER

DETAIL SHEET:

V25-08



**LEGEND**

- |                                |                                   |
|--------------------------------|-----------------------------------|
| ① Steel Stud (16 GA typical)   | ⑦ A/V Barrier                     |
| ② Wall anchor                  | ⑧ Exterior Wall                   |
| ③ SFS Rivet or Torx head screw | ⑨ Steel Backing Plate as required |
| ④ X-H25 profile                | ⑩ End profile                     |
| ⑤ X-Z25 profile                | ⑪ Vent Screen 40% perf.           |
| ⑥ Exterior panel 8-10mm        |                                   |

NOTES:

---



---



---



---



---



SYSTEM:

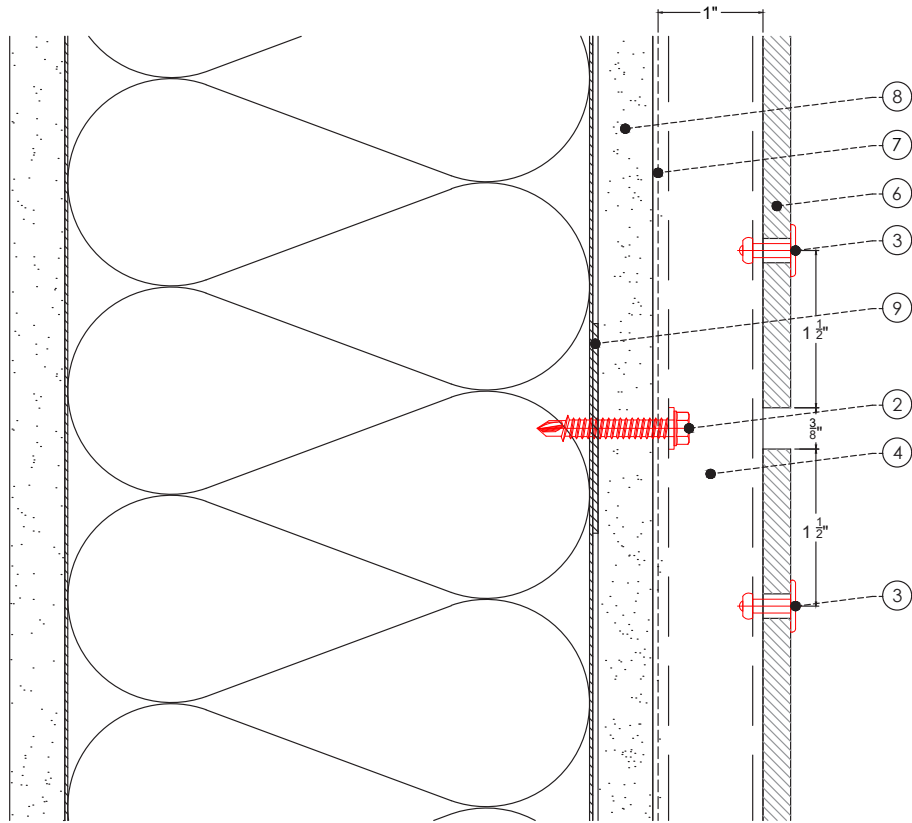
X-V25

DETAIL:

SECTION WINDOW HEAD

DETAIL SHEET:

V25-09



**LEGEND**

- |                                |                                   |
|--------------------------------|-----------------------------------|
| ① Steel Stud (16 GA typical)   | ⑦ A/V Barrier                     |
| ② Wall anchor                  | ⑧ Exterior Wall                   |
| ③ SFS Rivet or Torx head screw | ⑨ Steel Backing Plate as required |
| ④ X-H25 profile                | ⑩ End profile                     |
| ⑤ X-Z25 profile                | ⑪ Vent Screen 40% perf.           |
| ⑥ Exterior panel 8-10mm        |                                   |

NOTES:

---



---



---



---



---



SYSTEM:

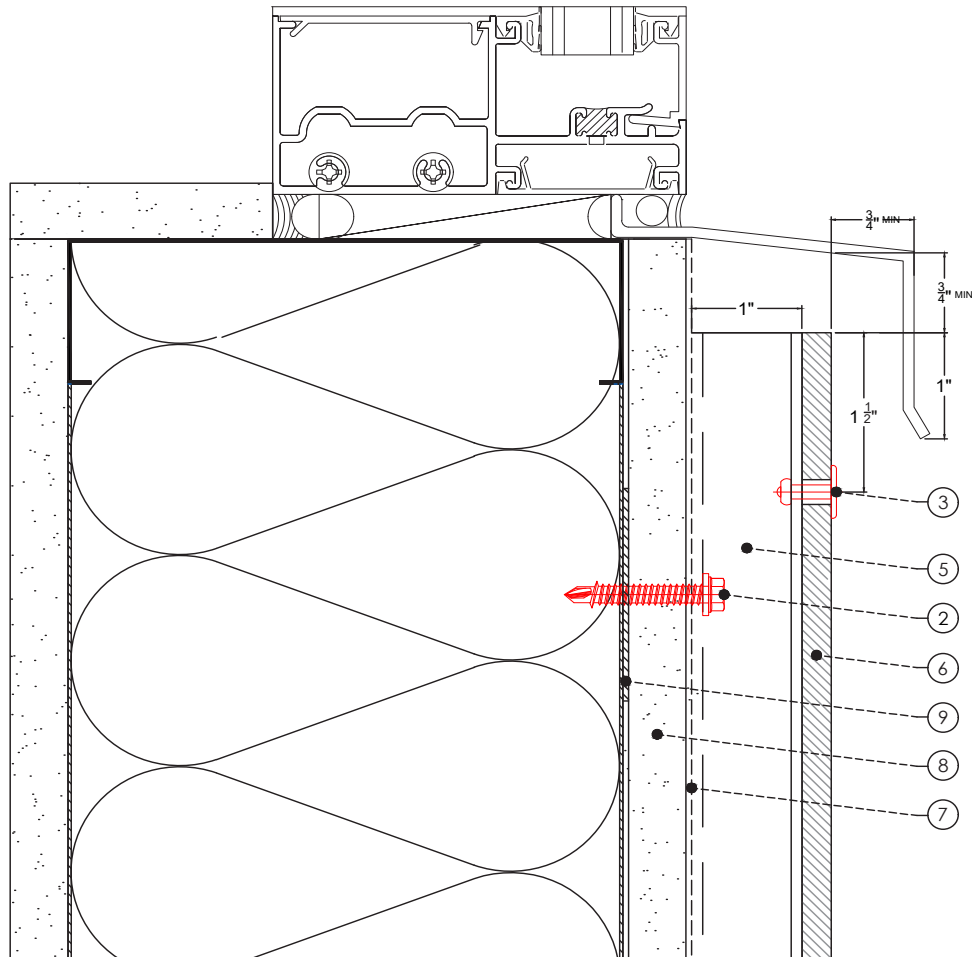
**X-V25**

DETAIL:

**SECTION HORIZONTAL PANEL JOINT**

DETAIL SHEET:

**V25-10**



**LEGEND**

- |                                |                                   |
|--------------------------------|-----------------------------------|
| ① Steel Stud (16 GA typical)   | ⑦ A/V Barrier                     |
| ② Wall anchor                  | ⑧ Exterior Wall                   |
| ③ SFS Rivet or Torx head screw | ⑨ Steel Backing Plate as required |
| ④ X-H25 profile                | ⑩ End profile                     |
| ⑤ X-Z25 profile                | ⑪ Vent Screen 40% perf.           |
| ⑥ Exterior panel 8-10mm        |                                   |

NOTES:




SYSTEM:

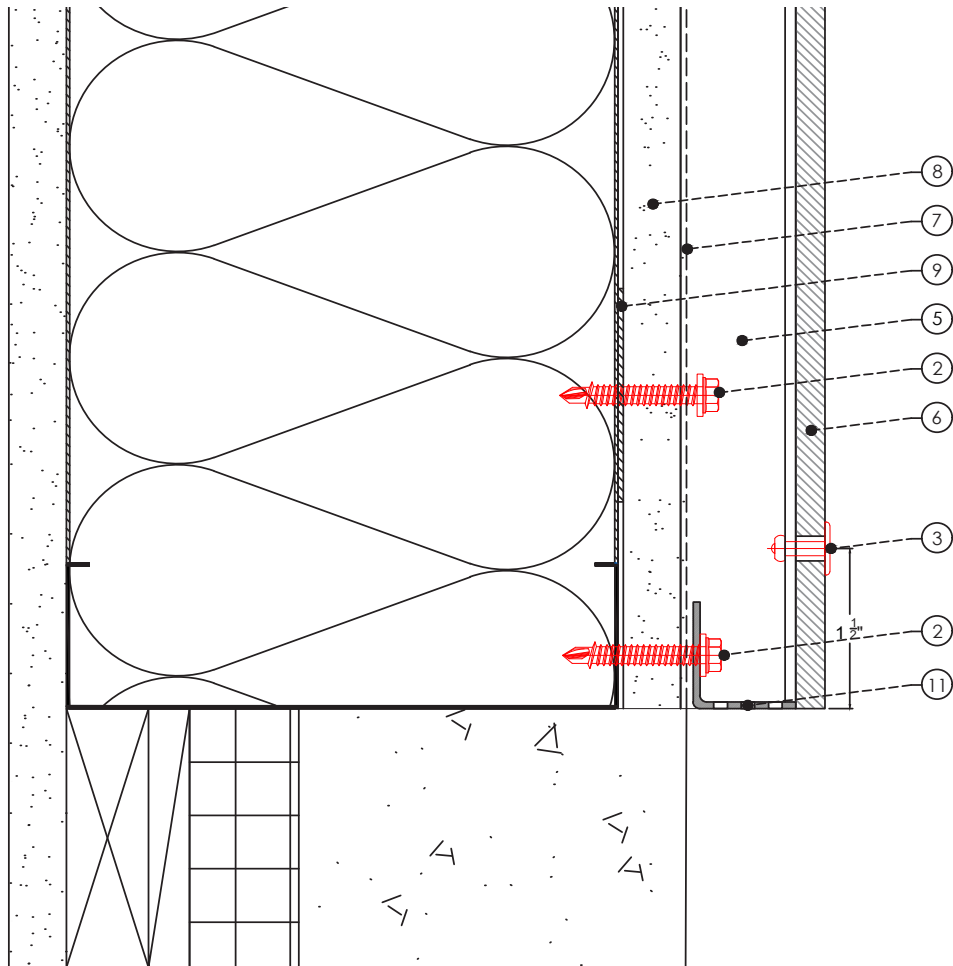
X-V25

DETAIL:

SECTION WINDOW SILL

DETAIL SHEET:

V25-11



**LEGEND**

- |                                |                                   |
|--------------------------------|-----------------------------------|
| ① Steel Stud (16 GA typical)   | ⑦ A/V Barrier                     |
| ② Wall anchor                  | ⑧ Exterior Wall                   |
| ③ SFS Rivet or Torx head screw | ⑨ Steel Backing Plate as required |
| ④ X-H25 profile                | ⑩ End profile                     |
| ⑤ X-Z25 profile                | ⑪ Vent Screen 40% perf.           |
| ⑥ Exterior panel 8-10mm        |                                   |

NOTES:

---



---



---



---



---



SYSTEM:

X-V25

DETAIL:

SECTION BASE DETAIL

DETAIL SHEET:

V25-12